



# CLINICALLY VALIDATED FORMULATIONS

PHARMACIST FORMULATED  
SUPPLEMENTS FUELED  
BY SCIENCE



[purewisenaturals.com](http://purewisenaturals.com)



# About Us

Purewise was founded from a passion for health, wellness, and living a life of balance. We want to ensure everyone from all walks of life has what they need to live healthy, happy, and balanced lives. That means access to high-quality, innovative and effective products, rich in Mother Nature's benefits.

Today, Purewise offers a full line of natural, safe and effective supplements that complement an active, balanced life. Inspired by nature and guided by the latest science, we focus on using premium ingredients that are good for the body and can help improve our customers' overall well-being. Our mission is to make quality, natural nutrition more affordable, convenient, and accessible for all.







# Table of Contents

## CAPSULE BLENDS ..... 1

|                                      |    |
|--------------------------------------|----|
| Men's Multi                          | 2  |
| Women's Multi                        | 2  |
| Children's Multi                     | 2  |
| Vision Support                       | 3  |
| Multimineral Complex                 | 3  |
| Multi-enzyme                         | 4  |
| Multiprobiotic                       | 4  |
| Colon Health                         | 4  |
| Omega-3 Blend                        | 5  |
| Heart Health                         | 6  |
| Cholesterol Support                  | 6  |
| Blood Pressure                       | 6  |
| Iron Tonic                           | 7  |
| Hematinic                            | 7  |
| Anemia Support                       | 7  |
| Bone Health                          | 8  |
| Joint Health                         | 8  |
| Calcium Blend                        | 8  |
| Mega Immunity                        | 9  |
| Zinc Immunity                        | 9  |
| Fertility for Him                    | 10 |
| Prostate Health                      | 10 |
| Fertility for Her                    | 11 |
| Fertility + Prenatal                 | 12 |
| Prenatal                             | 12 |
| Organic Prenatal                     | 12 |
| Organic Prenatal + Digestive Support | 13 |
| Organic Lactation Support            | 13 |
| Organic Postpartum & Menstrual Care  | 13 |
| Menopause Support                    | 14 |
| PMS Support                          | 14 |
| Memory Support                       | 15 |
| Stress Support                       | 15 |

|                             |    |
|-----------------------------|----|
| Depression Support          | 15 |
| Kidney Health               | 16 |
| Urinary Support             | 16 |
| Liver Health                | 16 |
| Hair, Skin, & Nails         | 17 |
| Glutathione                 | 18 |
| Apple Cider Vinegar Complex | 18 |
| Herbal Sleep                | 18 |
| Keto Advanced Weight Loss   | 20 |
| Muscle Support              | 20 |
| Blood Sugar Support         | 20 |
| B Vitamin Complex           | 20 |
| Brain Support               | 20 |
| Vitamin C Complex           | 20 |
| Hair Support                | 20 |
| Horny Goat Weed Blend       | 20 |
| Ginseng Blend               | 20 |
| Amino Acid Blend            | 20 |
| Men's Health                | 20 |
| Super Testosterone          | 20 |
| Thyroid Wellness            | 20 |
| Calcium and Vitamin C       | 20 |
| Vitamin D3 and K2           | 20 |

## SIMPLE WELLNESS CAPSULES ..... 21

|                           |    |
|---------------------------|----|
| Calcium                   | 22 |
| Apple Cider Vinegar       | 22 |
| Inositol                  | 22 |
| Phosphatidylserine        | 22 |
| Graviola                  | 22 |
| Garcinia Cambogia         | 22 |
| Green Coffee Bean Extract | 22 |
| Moringa                   | 22 |
| Papaya                    | 22 |
| Spirulina                 | 22 |
| Maca Root                 | 22 |
| Alpha Lipoic Acid         | 22 |
| CoQ10                     | 22 |
| Ginkgo Biloba             | 22 |

|                    |    |
|--------------------|----|
| Goldenseal         | 22 |
| Grape Seed Extract | 22 |
| Panax Ginseng      | 22 |
| Melatonin          | 22 |
| Olive Leaf Extract | 22 |
| Resveratrol        | 22 |
| Saw Palmetto       | 22 |
| Selenium           | 22 |
| Spirulina          | 22 |
| Chlorophyll        | 22 |
| Biotin             | 22 |

## ORGANIC CAPSULES ... 23

|                           |    |
|---------------------------|----|
| Ashwagandha               | 24 |
| Elderberry                | 24 |
| Beetroot                  | 24 |
| Organic Vitamin C         | 25 |
| Tart Cherry Extract       | 25 |
| Organic Mushroom Complex  | 26 |
| Organic Turmeric Curcumin | 26 |
| Organic Fruits            | 27 |
| Organic Veggies           | 28 |
| Vitamin E                 | 28 |
| Agaricus Blazei Extract   | 28 |
| Shiitake Extract          | 28 |
| Maitake Extract           | 28 |
| Maca (Black and Red)      | 28 |
| Lion's Mane Extract       | 28 |
| Reishi Extract            | 28 |

## POWDERS ..... 29

|                              |    |
|------------------------------|----|
| Plant Protein Powder         | 30 |
| Lemon Electrolyte Drink      | 30 |
| Whey Protein Drink Blends    | 30 |
| Prenatal                     | 30 |
| Energy Drink Blends          | 30 |
| Electrolytes Drink Blends    | 30 |
| Collagen Blend               | 30 |
| BCAA Drink Mix               | 30 |
| Collagen Protein Drink Blend | 30 |



## LIQUIDS ..... 31

|                                  |    |
|----------------------------------|----|
| Liquid Chlorophyll               | 32 |
| Oregano Oil                      | 32 |
| B-Complex Drops                  | 32 |
| Melatonin Drops                  | 33 |
| Sleep Drops                      | 33 |
| Vitamin K2 Drops                 | 33 |
| Vegan Vitamin D3 Drops           | 34 |
| Quercetin Drops                  | 34 |
| L-Carnitine + Vitamin B5 Drops   | 34 |
| Daily Mineral Drops              | 35 |
| Sport Mineral Drops              | 35 |
| Mushroom Liver Liquid Drops      | 35 |
| Organic Astragalus Root Drops    | 36 |
| Organic Vitamin D3 + K2 Drops    | 36 |
| Organic Echinacea Drops          | 36 |
| Organic Ginkgo Biloba Drops      | 37 |
| Organic Milk Thistle Drops       | 37 |
| Organic Sea Moss Drops           | 37 |
| Organic Stinging Nettle Drops    | 38 |
| Organic Valerian Root Drops      | 38 |
| Rose Petal Drops                 | 39 |
| Organic Methyl B-12 Liquid Spray | 39 |
| Collagen Blend                   | 39 |
| Black Cherry Concentrate         | 40 |
| Vitamin C                        | 40 |
| Multivitamin Liquid              | 40 |
| Hair, Skin & Nails               | 40 |
| Zinc Drops                       | 40 |
| Elderberry                       | 40 |
| Iron Drops                       | 40 |
| Herbal Glycerin Tinctures        | 40 |
| Turmeric Extract                 | 40 |
| Ashwaghandha Extract             | 40 |
| Lions Mane Mushroom Extract      | 40 |
| Kava Extract                     | 40 |
| Omega-3 Drops                    | 40 |
| Pure Iodine Drops                | 40 |
| Papaya Tincture                  | 40 |
| Liquid Multivitamin              | 40 |
| Concentrate                      | 40 |

|   |    |
|---|----|
| 100% Organic Noni Juice                 | 40 |
| Flavored Noni Juice                     | 40 |
| Tart Cherry Concentrate                 | 40 |
| Dark Sweet Cherry Concentrate           | 40 |
| Cranberry Concentrate                   | 40 |
| Blueberry Concentrate                   | 40 |
| MCT Oil                                 | 40 |
| Weight Management Liquid Blend          | 40 |
| Grapefruit Seed Drops                   | 40 |
| Green Tea Liquid Blend                  | 40 |
| Joint Support Drops                     | 40 |
| Organic Adrenal Support Drops           | 40 |
| Organic Turmeric and Black Pepper Blend | 40 |
| Organic Lion's Mane Drops               | 40 |
| Organic Ginseng Drops                   | 40 |
| Organic Maca Root Drops                 | 40 |
| Calcium and Magnesium Liquid Blend      | 40 |
| Iodine Drops                            | 40 |

## SOFTGELS ..... 41

|                                |    |
|--------------------------------|----|
| Vitamin D3                     | 42 |
| Eye Health                     | 42 |
| Garlic Extract                 | 42 |
| Vitamin K2                     | 42 |
| Caprylic Acid                  | 42 |
| Super Multivitamin             | 42 |
| Fish Oil                       | 42 |
| CLA                            | 42 |
| Vitamin E                      | 42 |
| Biotin                         | 42 |
| Organic Flax Oil (with Lignan) | 42 |
| Palmetto                       | 42 |
| Melatonin                      | 42 |
| Lycopene                       | 42 |
| Lutein                         | 42 |
| Omega 3-6-9                    | 42 |
| Oregano Oil                    | 42 |
| Phosphatidylcholine            | 42 |
| Phosphatidylserine             | 42 |
| Lecithin                       | 42 |

|                           |    |
|---------------------------|----|
| CoQ10                     | 42 |
| Cranberry Extract         | 42 |
| Cod Liver Oil             | 42 |
| Vitamin A (Beta Carotene) | 42 |
| Biotin                    | 42 |
| B Vitamin Complex         | 42 |
| Astaxanthin               | 42 |
| Antioxidant Blend         | 42 |
| Alpha Lipoic Acid         | 42 |

## TABLETS ..... 43

|                          |    |
|--------------------------|----|
| Vitamin C Chewables      | 44 |
| Bone Builder Chewables   | 44 |
| B Vitamin Complex        | 44 |
| Calcium                  | 44 |
| Calcium, Magnesium, Zinc | 44 |
| Folic Acid               | 44 |
| Magnesium                | 44 |
| Potassium Gluconate      | 44 |
| Hair, Skin, & Nails      | 44 |
| Mens Health Complex      | 44 |
| Minerals Complex         | 44 |
| Womens Health Complex    | 44 |
| Vitamin B12              | 44 |
| Vitamin D3 and K2        | 44 |
| Zinc Gluconate           | 44 |

## PERSONAL CARE ..... 45

|                 |    |
|-----------------|----|
| Relieving Salve | 46 |
| Muscle Rub Balm | 46 |
| Eye Serum       | 46 |
| Facial Serum    | 46 |
| Massage Oil     | 46 |
| Beard Oil       | 46 |

A close-up photograph of a woman with long, wavy blonde hair and light green eyes. She is looking slightly to the right with a soft smile. She is holding a clear glass of water in her left hand and a small, clear capsule with a green band in her right hand. She is wearing a light blue top. The background is a bright, out-of-focus indoor setting.

# Capsule

## BLENDS

Purewise capsule blends are formulated with essential vitamins, minerals, and nutrients required for a healthy and active lifestyle. Available in clear capsules, vegetarian capsules, and organic vegetarian capsules.





## Men's Multivitamins

PREMIUM DAILY SOURCE OF  
VITAMINS & MINERALS

Purewise Men's Multivitamin offers customized nutritional support – packed with essential vitamins and minerals to help increase energy and stamina levels, enhance immune response, improve antioxidant capabilities, and promote general male health and well-being.

## Supplement Facts

Serving Size: 2 Capsules  
Servings per Container: 30

|  | Amount Per Serving | %DV  |
|--|--------------------|------|
| Vitamin A (as Beta Carotene)           | 300 mcg            | 33%  |
| Vitamin C (as Ascorbic Acid)           | 40 mg              | 44%  |
| Calcium (as Calcium Citrate)           | 100 mg             | 8%   |
| Iron (as Ferrous Bisglycinate Chelate) | 18 mg              | 100% |
| Vitamin D3 (as Cholecalciferol)        | 50 mcg             | 250% |
| Vitamin E (as d-alpha tocopherol)      | 9 mg               | 60%  |
| Vitamin K1 (as Phytonadione)           | 12 mcg             | 10%  |
| Vitamin B1 (as Thiamin HCl)            | 1.1 mg             | 92%  |
| Riboflavin                             | 1.2 mg             | 92%  |
| Niacin                                 | 16 mg NE           | 100% |
| Vitamin B6 (as Pyridoxine HCl)         | 1 mg               | 59%  |
| Folic Acid                             | 300 mcg DFE        | 75%  |
| Vitamin B12 (as Methylcobalamin)       | 2 mcg              | 83%  |
| Iodine (as Potassium Iodine)           | 90 mcg             | 60%  |
| Magnesium (as Magnesium Oxide)         | 40 mg              | 10%  |
| Zinc (as Zinc Citrate)                 | 5 mg               | 45%  |

\*Daily value not established.

Other Ingredients: Dextrose Granular, Sorbitol Granular, Microcrystalline Cellulose, Cherry Flavor, Citric Acid, Starch 1500, Stearic Acid, Silica Dioxide, Magnesium Stearate, FD&C #40 lake, FD&C Yellow #6 lake, FD&C Blue #2 Lake.



## Men's Multivitamins

DAILY NUTRITIONAL NEEDS  
FOR WOMEN

Purewise Women's Multivitamin is packed with essential vitamins and minerals to help nourish, energize, and fuel female vitality at the cellular level. Our formula is tailor-made to meet the everyday nutritional needs of women including immune, heart, and digestive health.

## Supplement Facts

Serving Size: 2 Capsules  
Servings per Container: 30

|   | Amount Per Serving | %DV   |
|---|--------------------|-------|
| Vitamin A (as Beta Carotene)                  | 1mg                | 135%  |
| Vitamin C (as Ascorbic Acid)                  | 90mg               | 100%  |
| Calcium (as Calcium Phosphate)                | 50mg               | 4%    |
| Vitamin D3 (as Cholecalciferol)               | 20mcg              | 100%  |
| Vitamin E (as d-alpha tocopherol)             | 15mg               | 100%  |
| Vitamin K1 (as Phytonadione)                  | 120mcg             | 100%  |
| Vitamin B1 (as Thiamin HCl)                   | 1.3mg              | 108%  |
| Riboflavin                                    | 1.3mg              | 100%  |
| Niacin  | 18mg NE            | 110%  |
| Vitamin B6 (as Pyridoxine HCl)                | 2mg                | 118%  |
| Folate (as L-Methylfolate)                    | 400mcg DFE         | 100%  |
| Vitamin B12 (as Methylcobalamin)              | 27mcg              | 1125% |
| Biotin  | 33mcg              | 110%  |
| Pantothenic Acid                              | 5mg                | 100%  |
| Phosphorus (as Phosphorus Amino Acid Chelate) | 106mg              | 8%    |
| Iodine (as Potassium Iodide)                  | 150mcg             | 100%  |
| Magnesium (as Magnesium Oxide)                | 50mg               | 12%   |
| Zinc (as Zinc Citrate)                        | 15mg               | 136%  |
| Selenium (as L-Selenomethionine)              | 50mcg              | 91%   |
| Copper (as Copper Citrate)                    | 0.5mg              | 56%   |
| Manganese (as Manganese Citrate)              | 2mg                | 87%   |
| Chromium (as Chromium Picolinate)             | 35mcg              | 100%  |
| Molybdenum (as Molybdenum Amino Acid Chelate) | 75mcg              | 167%  |
| Potassium (as Potassium Citrate)              | 25mg               | <1%   |
| Choline (as Choline Bitartrate)               | 110mg              | 20%   |

\*Daily value not established.

Other Ingredients: Vegetable cellulose (capsule).



## Children's Multivitamins

DAILY NUTRITIONAL NEEDS  
FOR KIDS

Uniquely balanced to nourish your child's health and growth, Purewise Children's Multi is rich in essential vitamins, nutrients and antioxidants to support their immunity, bones, teeth, energy, eyes and digestion.

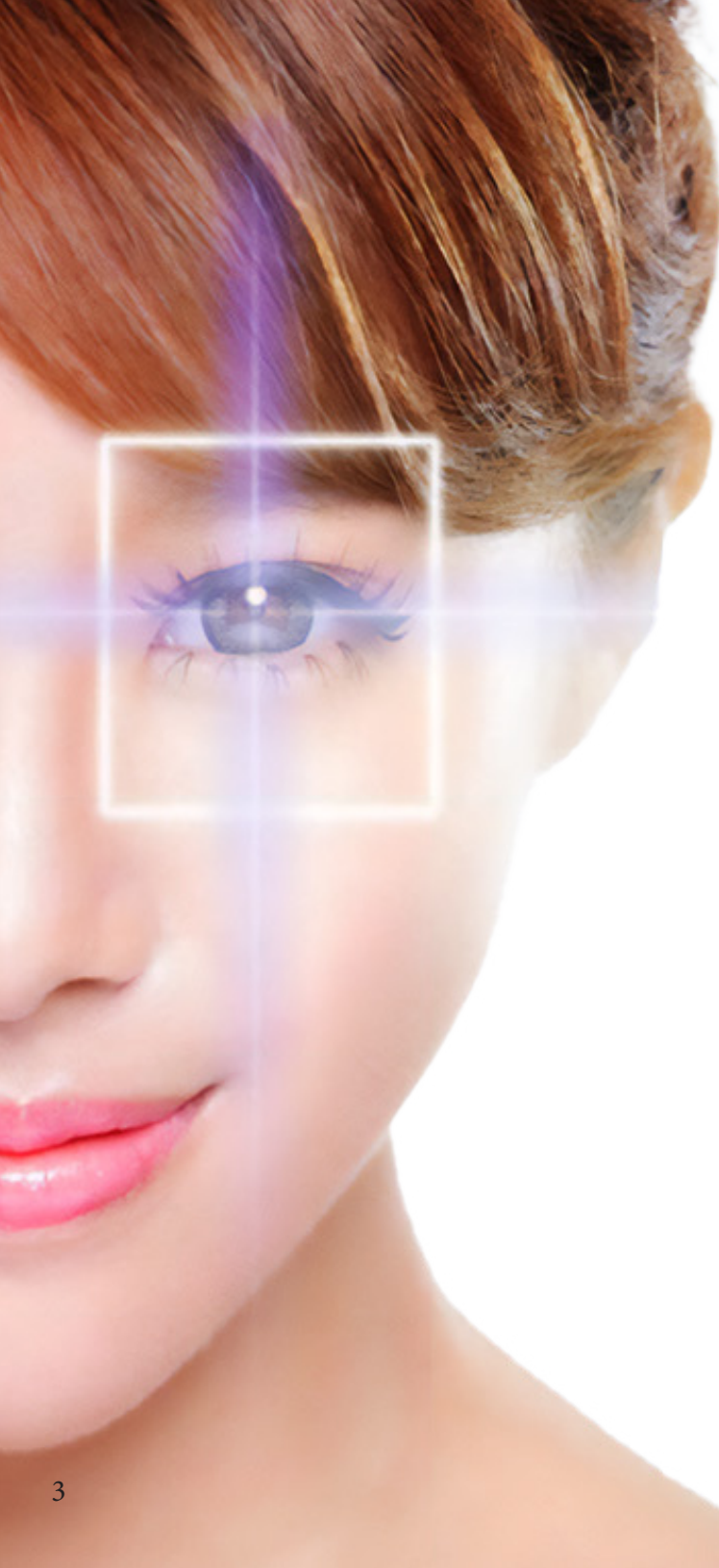
## Supplement Facts

Serving Size: 2 Capsules  
Servings per Container: 30

|   | Amount Per Serving | %DV   |
|---|--------------------|-------|
| Vitamin A (as Beta Carotene)                  | 450 mcg            | 50%   |
| Vitamin C (as Ascorbic Acid)                  | 90 mg              | 100%  |
| Calcium (as Calcium Phosphate)                | 250 mg             | 19%   |
| Iron (as Ferrous Bisglycinate Chelate)        | 9 mg               | 50%   |
| Vitamin D3 (as Cholecalciferol)               | 25 mcg             | 125%  |
| Vitamin E (as d-alpha tocopherol)             | 15 mg              | 100%  |
| Vitamin K1 (as Phytonadione)                  | 60 mcg             | 50%   |
| Vitamin B1 (as Thiamin HCl)                   | 1.2 mg             | 100%  |
| Vitamin B6 (as Pyridoxine HCl)                | 2 mg               | 118%  |
| Folate (as L-Methylfolate)                    | 660 mcg DFE        | 165%  |
| Vitamin B12 (as Methylcobalamin)              | 27 mcg             | 1125% |
| Biotin  | 30 mcg             | 100%  |
| Pantothenic Acid                              | 5 mg               | 100%  |
| Phosphorus (as Phosphorus Amino Acid Chelate) | 46 mg              | 8%    |
| Iodine (as Potassium Iodide)                  | 150 mcg            | 100%  |
| Magnesium (as Magnesium Oxide)                | 50 mg              | 12%   |
| Zinc (as Zinc Citrate)                        | 11 mg              | 100%  |
| Selenium (as L-Selenomethionine)              | 55 mcg             | 100%  |
| Copper (as Copper Citrate)                    | 0.9 mg             | 100%  |
| Manganese (as Manganese Citrate)              | 2.3 mg             | 100%  |
| Chromium (as Chromium Picolinate)             | 35 mcg             | 100%  |
| Molybdenum (as Molybdenum Amino Acid Chelate) | 55 mcg             | 122%  |
| Choline (as Choline Bitartrate)               | 150 mg             | 27%   |

\*Daily value not established.

Other Ingredients: Vegetable cellulose (capsule).



## Vision Support

WITH VITAMINS A & C, ZINC,  
BILBERRY, GRAPESEED

Purewise Vision Support formula helps support eye health and replenish vital eye nutrients that you can lose as you age. Formulated with Vitamins A & C, Zinc, Bilberry, Grape seed, Lutein, Lycopene, and other ocular-friendly nutrients.

## Supplement Facts

Serving Size: 2 Capsules  
Servings per Container: 30

|   | Amount Per Serving | %DV    |
|---|--------------------|--------|
| Vitamin A (as Beta Carotene)  | 1.8 mg             | 200%   |
| Vitamin C (as Ascorbic Acid)  | 50 mg              | 55%    |
| Vitamin E (as d-Alpha Tocopherol Succinate)   | 20 mg              | 133%   |
| Vitamin B2 (as Riboflavin)  | 10 mg              | 769%   |
| Vitamin B6 (as Pyridoxine HCl)  | 10 mg              | 588%   |
| Vitamin B12 (as Methylcobalamin)  | 50mcg              | 2,083% |
| Magnesium (as Magnesium Oxide)  | 100 mg             | 23.8%  |
| Zinc (as Zinc Oxide)  | 40 mg              | 364%   |
| Selenium (as Selenium Yeast)  | 55 mcg             | 100%   |
| Chromium (as Chromium Picolinate)   | 50 mcg             | 143%   |
| Lutein 5%   | 400 mg             | *      |
| Bilberry Fruit Extract  | 50 mg              | *      |
| Grape Seed Extract  | 50 mg              | *      |
| L-Glutathione   | 50 mg              | *      |
| Rutin   | 50 mg              | *      |
| Zeaxanthin 5%   | 20 mg              | *      |
| Inositol  | 17 mg              | *      |
| Alpha Lipoic Acid   | 10 mg              | *      |
| Lycopene Complex (contains 5% Lycopene)<br>(from Tomato Fruit Extract)                  | 10 mg              | *      |
| Astaxanthin Complex (contains 2% Astaxanthin)<br>(from Haematococcus Pluvialis Extract) | 4 mg               | *      |

\*Daily value not established.  
Other ingredients: silica dioxide, magnesium stearate, vegetable cellulose (capsule).



## Multimineral Complex

WITH 9 ESSENTIAL TRACE  
VITAMINS

Start your day right with Purewise Multimineral Complex! Our comprehensive blend offers a balanced formula of 9 essential trace vitamins for your overall health and vitality support, including bone health, muscle development, and optimized metabolism.

## Supplement Facts

Serving Size: 2 Capsules  
Servings per Container: 30

|   | Amount Per Serving | %DV  |
|---|--------------------|------|
| Calcium (as Calcium Citrate)                | 150 mg             | 12%  |
| Iodine (as Potassium Iodide)                | 75 mcg             | 50%  |
| Magnesium (as Magnesium Amino Acid Chelate) | 220 mg             | 52%  |
| Zinc (as Zinc Picolinate)                   | 11 mg              | 100% |
| Selenium (as Selenomethionine)              | 100 mcg            | 181% |
| Chromium (as Chromium Picolinate)           | 100 mcg            | 285% |
| Manganese (as Manganese Amino Acid Chelate) | 3 mg               | 130% |
| Molybdenum                                  | 50 mcg             | 111% |
| Boron Amino Acid Chelate                    | 2 mg               | *    |

\*Daily value not established.

Other ingredients: silica dioxide, magnesium stearate, vegetable cellulose (capsule).





## Multi-enzyme

### MULTIPLE FOOD INTOLERANCE

Soothe and nourish your digestive tract for optimal gut health with Purewise Multi-enzyme. Our premium blend helps support healthy digestion, bloating relief, and nutrient absorption. Formulated for men and women.

## Supplement Facts

Serving Size: 1 Capsule  
Servings per Container: 30

|                                | Amount Per Serving | %DV      |
|--------------------------------|--------------------|----------|
| <b>Multienzyme Blend</b>       | <b>400 mg</b>      | <b>*</b> |
| Protease Blend (23,720 HUT)    |                    |          |
| Amylase Blend (22,418 DU)      |                    |          |
| Glucoamylase (46 AGU)          |                    |          |
| Diastase (325 DP)              |                    |          |
| Invertase (353 SU)             |                    |          |
| Pectinase (697 ADJU)           |                    |          |
| Cellulase (2,883 CU)           |                    |          |
| Hemicellulase (39 HCU)         |                    |          |
| Xylanase (553 XU)              |                    |          |
| Lipase (3,813 FIP)             |                    |          |
| Lactase (883 ALU)              |                    |          |
| Alpha Galactosidase (423 GALU) |                    |          |
| Beta Glucanase (51 BGU)        |                    |          |
| Phytase (4mg)                  |                    |          |

\*Daily value not established.

Other ingredients: silica dioxide, magnesium stearate, vegetable cellulose (capsule).



## Multiprobiotic

### DAILY PROBIOTIC SUPPLEMENT

Purewise Multiprobiotic is powered by 12 billion live cultures and features 12 beneficial strains for optimal digestive health and immune support. Our premium formula helps relieve occasional gas, bloating, abdominal discomfort, constipation, and irregularity.

## Supplement Facts

Serving Size: 1 Capsule  
Servings per Container: 30

|   | Amount Per Serving | %DV      |
|---|--------------------|----------|
| <b>Proprietary Blend Containing 50B CFU</b> | <b>250mg</b>       | <b>*</b> |
| Lactobacillus plantarum                     |                    |          |
| Lactobacillus acidophilu                    |                    |          |
| Bifidobacterium lactis                      |                    |          |
| Lactobacillus rhamnosus                     |                    |          |
| Lactobacillus paracasei                     |                    |          |
| Lactobacillus casei                         |                    |          |
| Lactobacillus gasseri                       |                    |          |
| Lactobacillus reuteri                       |                    |          |
| Lactobacillus salivarius                    |                    |          |
| Bifidobacterium bifidum                     |                    |          |
| Bifidobacterium longum                      |                    |          |
| Streptococcus thermophilus                  |                    |          |

\*Daily value not established.

Other ingredients: MMC, silica dioxide, magnesium stearate, vegetable cellulose (capsule).



## Colon Health

### HERBAL DIGESTIVE FORMULA

Purewise Colon Health contains probiotics to support overall digestive health by restoring natural, good bacteria. This helps promote regularity and defends against occasional digestive upsets such as constipation, diarrhea, gas, and bloating.

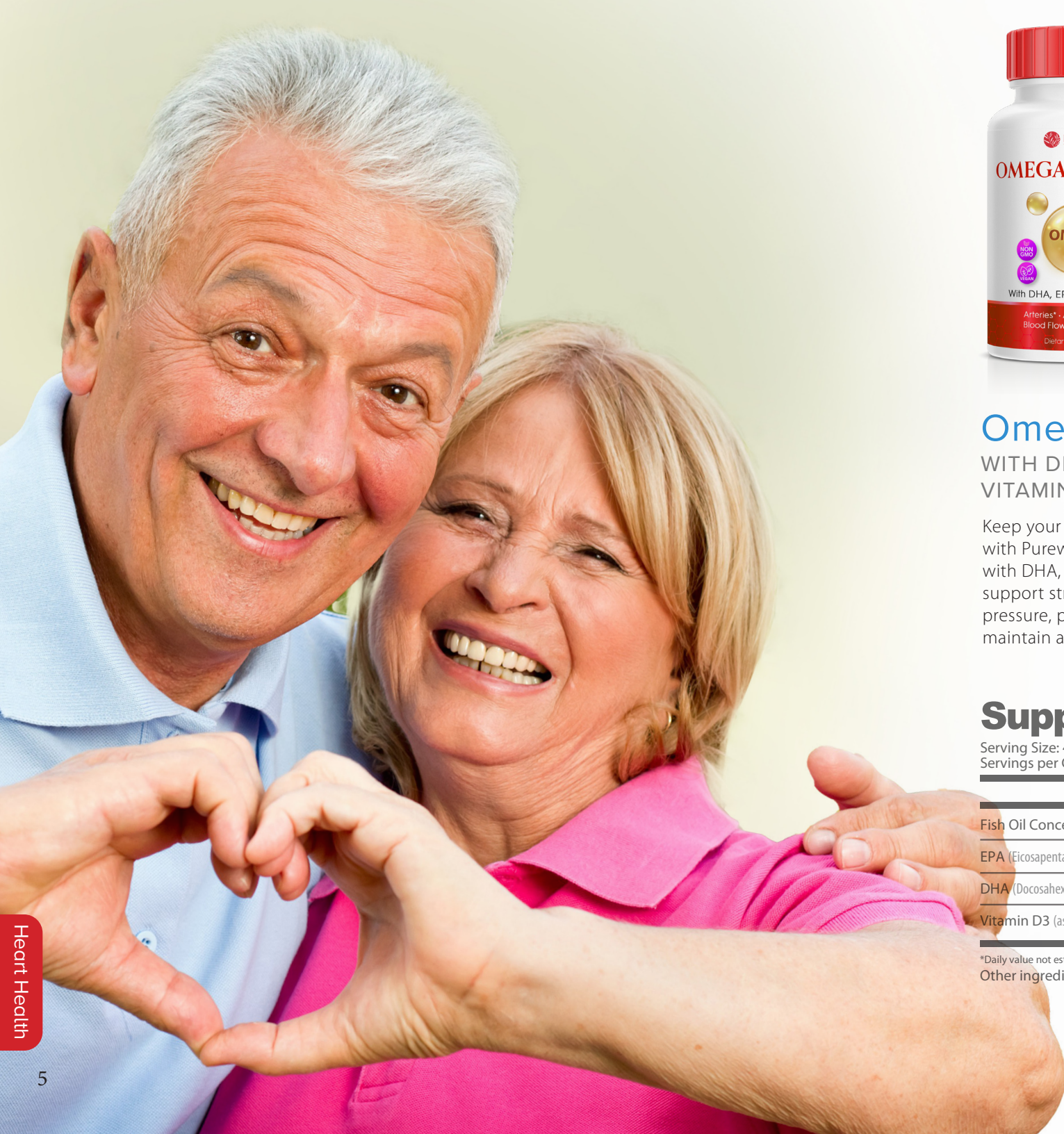
## Supplement Facts

Serving Size: 1 Capsule  
Servings per Container: 30

|                                    | Amount Per Serving | %DV      |
|------------------------------------|--------------------|----------|
| <b>Enzyme Blend</b>                | <b>200 mg</b>      | <b>*</b> |
| <b>Inulin</b>                      | <b>200 mg</b>      | <b>*</b> |
| <b>Multistrain Probiotic</b>       | <b>100 mg</b>      | <b>*</b> |
| <b>Deglycyrrhizinated Licorice</b> | <b>25 mg</b>       | <b>*</b> |

\*Daily value not established.

Other ingredients: vegetable cellulose (capsule).



## Omega-3 Blend

WITH DHA, EPA &  
VITAMIN D3

Keep your heart performing at its prime with Purewise Omega-3 Blend! Developed with DHA, EPA and Vitamin D3 to help support strong arteries, improve arterial pressure, promote ideal blood flow, and maintain a healthy heart.

## Supplement Facts

Serving Size: 4 Softgels  
Servings per Container: 30

|                                      | Amount Per Serving | %DV  |
|--------------------------------------|--------------------|------|
| Fish Oil Concentrate                 | 4000 mg            | *    |
| EPA (Eicosapentaenoic Acid)          | 1600 mg            | *    |
| DHA (Docosahexaenoic Acid)           | 1200 mg            | *    |
| Vitamin D3 (as Cholecalciferol 2.5%) | 1600 IU            | 200% |

\*Daily value not established.

Other ingredients: fish gelatin, glycerin, purified water





## Heart Health

### OPTIMAL CIRCULATORY FUNCTION

Power and protect heart vitality, cardiovascular health and cellular energy with Purewise Heart Health! Formulated with CoQ10, Garlic, Grapeseed, Olive Leaf, Turmeric + other essential nutrients that help maintain optimal circulatory function and protect against free radical damage to promote overall health.

## Supplement Facts

Serving Size: 2 Capsules  
Servings per Container: 30

|   | Amount Per Serving | %DV  |
|---|--------------------|------|
| Vitamin D3 (as Cholecalciferol)             | 20mcg              | 100% |
| Magnesium (as Magnesium Amino Acid Chelate) | 50mg               | 12%  |
| CoQ10                                       | 25mg               | *    |
| Resveratrol                                 | 15mg               | *    |
| Gugulipid                                   | 100mg              | *    |
| Beet Root Extract                           | 200mg              | *    |
| Turmeric Extract                            | 150mg              | *    |
| Grape Seed Extract                          | 100mg              | *    |
| Garlic Extract                              | 100mg              | *    |
| Olive Leaf Extract                          | 100mg              | *    |
| Hibiscus Flower 4:1 Extract                 | 100mg              | *    |
| Pomegranate Extract                         | 50mg               | *    |
| Black Pepper Extract                        | 5mg                | *    |

\*Daily value not established.

Other ingredients: silica dioxide, magnesium stearate, vegetable cellulose (capsule).



## Cholesterol Support

### WITH GARLIC, CITRUS BERGAMOT & RED YEAST RICE

Help lower cholesterol naturally with Purewise Cholesterol Support – a special blend of Niacin, Garlic, Citrus Bergamot, Red Yeast Rice, and other natural essential nutrients that help reduce bad LDL cholesterol and support overall heart health.

## Supplement Facts

Serving Size: 2 Capsules  
Servings per Container: 30

|                                 | Amount Per Serving | %DV  |
|---------------------------------|--------------------|------|
| Vitamin D3 (as Cholecalciferol) | 20mcg              | 100% |
| Niacin                          | 35 mg NE           | 219% |
| Citrus Bergamot Extract         | 650mg              | *    |
| Red Yeast Rice                  | 500mg              | *    |
| Garlic Extract                  | 20mg               | *    |

\*Daily value not established.

Other ingredients: silica dioxide, vegetable magnesium stearate, vegetable cellulose (capsule).



## Blood Pressure

### WITH GARLIC, OLIVE LEAF & JUNIPER BERRY

Support circulatory health naturally with our Blood Pressure formula. Developed with clinically-supported natural ingredients such as Garlic, Olive Leaf, Hawthorne, Juniper Berry, Green Tea and other natural anti-hypertensive herbal compounds and essential vitamins to support overall heart health.

## Supplement Facts

Serving Size: 1 Capsule  
Servings per Container: 30

|  | Amount Per Serving | %DV    |
|--|--------------------|--------|
| Vitamin C (as Ascorbic Acid)           | 60 mg              | 67%    |
| Niacin                                 | 2.5 mg NE          | 16%    |
| Vitamin B6 (as Pyridoxal-5'-Phosphate) | 5 mg               | 294%   |
| Folate (as Folic Acid)                 | 100 mcg DFE        | 42%    |
| Vitamin B12 (as Methylcobalamin)       | 100 mcg            | 4,166% |
| Hawthorne Extract                      | 150 mg             | *      |
| Garlic Extract                         | 100 mg             | *      |
| Hibiscus 4:1 Extract                   | 100 mg             | *      |
| Olive Leaf Extract                     | 100 mg             | *      |
| Uva Ursi 4:1 Extract                   | 15 mg              | *      |
| Juniper Berry Powder                   | 15 mg              | *      |
| Green Tea Extract (Decaffeinated)      | 15 mg              | *      |

\*Daily value not established.

Other ingredients: silica dioxide, magnesium stearate, vegetable cellulose (capsule).



## Iron tonic

### IRON + 8 ESSENTIAL NUTRIENTS

Formulated with Iron, Vitamin C, Folic Acid, and other important co-nutrients, Purewise Iron Tonic helps support improved iron absorption and metabolism, healthy red blood cell production, and improve energy levels.

## Supplement Facts

Serving Size: 1 Capsule  
Servings per Container: 30

|                              | Amount Per Serving | %DV  |
|------------------------------|--------------------|------|
| Vitamin C (as Ascorbic Acid) | 60 mg              | 67%  |
| Iron (as Ferrous Sulfate)    | 40 mg              | 222% |
| Thiamin                      | 2 mg               | 167% |
| Riboflavin                   | 2 mg               | 154% |
| Niacin (as Niacinamide)      | 10 mgNE            | 63%  |
| Folic Acid                   | 400 mcg DFE        | 100% |
| B12 (as Methylcobalamin)     | 15 mcg             | 625% |
| Zinc (as Zinc Oxide)         | 15 mg              | 136% |
| Copper (as Copper Oxide)     | .7 mg              | 78%  |

\*Daily value not established.

Other ingredients: silica dioxide, magnesium stearate, vegetable cellulose (capsule).



## Hematinic

### IRON + FOLIC ACID

Give your red blood cells a healthy boost! Formulated with Iron and Folic Acid, Purewise Hematinic supplements support hemoglobin levels and blood circulation – for healthy red blood cell production and function.

## Supplement Facts

Serving Size: 1 Capsule  
Servings per Container: 30

|                           | Amount Per Serving | %DV  |
|---------------------------|--------------------|------|
| Iron (as Ferrous Sulfate) | 40mg               | 222% |
| Folic Acid                | 500mg              | 125% |

\*Daily value not established.

Other ingredients: silicone dioxide, vegetable magnesium stearate, rice flour, vegetable cellulose (capsule).



## Anemia Support

### BEET, SPINACH, KALE, SWISS CHARD, AND PUMPKIN SEED

Nourish your body with Purewise Anemia Support – formulated with organic nutrients like Beet, Spinach, Kale, Swiss Chard, and Pumpkin Seed to help promote healthy red blood cell production, combat fatigue, and improve energy levels.

## Supplement Facts

Serving Size: 1 Capsule  
Servings per Container: 30

|  | Amount Per Serving | %DV  |
|--|--------------------|------|
| Iron (as Ferrous Bisglycinate Chelate) | 45 mg              | 250% |
| Vitamin B12 (Methylcobalamin)          | 2.4 mcg            | 100% |
| Organic Beet Root Powder               | 25 mg              | *    |
| Organic Spinach Powder                 | 25 mg              | *    |
| Organic Kale Powder                    | 25 mg              | *    |
| Organic Swiss Chard                    | 25 mg              | *    |
| Organic Pumpkin Seed                   | 25 mg              | *    |

\*Daily value not established.

Other ingredients: organic rice bran (nu-flo), vegetable cellulose (capsule).





## Bone Health

WITH CALCIUM, VITAMIN D3,  
MAGNESIUM & ZINC

Bone Health features a comprehensive formula that includes Calcium, Vitamin D3, Magnesium, Manganese, Zinc, and other essential nutrients that can help support bone health, density, growth, and repair.

## Supplement Facts

Serving Size: 2 Capsules  
Servings per Container: 30

|  | Amount Per Serving | %DV  |
|--|--------------------|------|
| Calcium (as Calcium Carbonate & Calcium Citrate) | 1000 mg            | 77%  |
| Vitamin D3 (as Cholecalciferol)                  | 30mcg              | 150% |
| Vitamin K2 (as MK-7)                             | 206 mcg            | 172% |
| Magnesium (as Magnesium Oxide)                   | 250 mg             | 60%  |
| Zinc (as Zinc Amino Acid Chelate)                | 2 mg               | 18%  |
| Manganese (as Manganese Amino Acid Chelate)      | 1 mg               | 43%  |
| Boron (as Boron Glycinate Chelate)               | 3 mg               | *    |

\*Daily value not established.

Other Ingredients: Silica Dioxide, Magnesium Stearate, Vegetable cellulose (capsule).



## Joint Health

OPTIMUM JOINT SUPPORT  
& COMFORT

Joint Health is formulated for optimum joint support and comfort. Our comprehensive blend helps support sensitive joints, balance joint stress, relieve discomfort and inflammation, and promote collagen production.

## Supplement Facts

Serving Size: 4 Capsules  
Servings per Container: 30

|                         | Amount Per Serving | %DV |
|-------------------------|--------------------|-----|
| Glucosamine Sulfate KCl | 1500mg             | *   |
| Chondroitin Sulfate     | 500mg              | *   |
| MSM                     | 500mg              | *   |
| Boswellia Serrate       | 100mg              | *   |
| Turmeric Extract        | 100mg              | *   |
| Hyaluronic Acid         | 25mg               | *   |

\*Daily value not established.

Other Ingredients: Silica Dioxide, Magnesium Stearate, Vegetable cellulose (capsule).



## Calcium Blend

CALCIUM + MAGNESIUM +  
VITAMIN D3

Get comprehensive support for bone, joint and teeth health with PureWise Calcium Blend! Specially formulated with a high potency combination of Calcium, Magnesium, and Vitamin D3 for effective & balanced skeletal health support.

## Supplement Facts

Serving Size: 5 Capsules  
Servings per Container: 30

|                                 | Amount Per Serving | %DV   |
|---------------------------------|--------------------|-------|
| Vitamin D3 (as Cholecalciferol) | 30 mcg             | 150%  |
| Calcium (as Calcium Carbonate)  | 700 mg             | 53.8% |
| Calcium (as Calcium Citrate)    | 300 mg             | 23%   |
| Magnesium (as magnesium oxide)  | 400 mg             | 95%   |

\*Daily value not established.

Other Ingredients: Silica Dioxide, Magnesium Stearate, Vegetable cellulose (capsule).



## Mega Immunity

### COMPLETE IMMUNITY BLEND

Mega Immunity offers a comprehensive blend of vitamins, minerals, and botanicals to support the body's natural immune defenses. Formulated with Elderberry, Garlic, Zinc and other immune-boosting essential nutrients for overall health.

## Supplement Facts

Serving Size: 1 Capsule  
Servings per Container: 30

|                           | Amount Per Serving | %DV  |
|---------------------------|--------------------|------|
| Iron (as Ferrous Sulfate) | 40mg               | 222% |
| Folic Acid                | 500mg              | 125% |

\*Daily value not established.

Other ingredients: silicone dioxide, vegetable magnesium stearate, rice flour, vegetable cellulose (capsule).



## Zinc Immunity

### STRENGTHEN IMMUNE SYSTEM AND NATURAL DEFENSES

Purewise Zinc Immunity provides this vital mineral to support and strengthen your immune system and natural defenses. Zinc also supports skin resilience and helps maintain the integrity of skin and mucous membranes.

## Supplement Facts

Serving Size: 1 Capsule  
Servings per Container: 30

|                           | Amount Per Serving | %DV  |
|---------------------------|--------------------|------|
| Zinc (as Zinc Picolinate) | 40 mg              | 364% |

\*Daily value not established.

Other ingredients: silica dioxide, magnesium stearate, vegetable cellulose (capsule).





## Fertility for Him

ENHANCED WITH KEY  
VITAMINS & MINERALS

Fertility for Him provides necessary vitamins and minerals like Vitamin C and Zinc that helps support sperm count, motility, quality, health, and overall fertility.

## Supplement Facts

Serving Size: 4 Capsules  
Servings per Container: 30

|                                       | Amount Per Serving | %DV  |
|---------------------------------------|--------------------|------|
| Vitamin C (as Ascorbic Acid)          | 120mg              | 130% |
| Vitamin D3 (as Cholecalciferol)       | 40mg               | 222% |
| Riboflavin                            | 2mg                | 154% |
| Niacin                                | 22mg NE            | 138% |
| Folic Acid                            | 400mcg DFE         | 100% |
| B12 (as Methylcobalamin)              | 12mcg              | 500% |
| Pantothenic Acid                      | 2mg                | 40%  |
| Magnesium (as Magnesium Citrate)      | 100mg              | 24%  |
| Zinc (as Zinc Picolinate)             | 20mg               | 182% |
| Selenium (as L-Selenomethionine)      | 70mcg              | 128% |
| Copper (as Copper Oxide)              | 2mg                | 222% |
| Manganese (as Manganese Citrate)      | 2mg                | 87%  |
| Chromium (as Chromium Polynicotinate) | 120mcg             | 343% |
| Iodine (as Potassium Iodide)          | 150mcg             | 100% |
| FenuGreek Extract                     | 100mg              | *    |
| L-arginine HCl                        | 100mg              | *    |
| L-Carnitine Tartrate                  | 100mg              | *    |
| Organic Ashwagandha Root Powder       | 100mg              | *    |
| Organic Maca Root Powder              | 100mg              | *    |
| Turmeric Powder                       | 100mg              | *    |

\*Daily value not established.

Other Ingredients: Vegetable Cellulose (capsule).



## Prostate Health

WITH SAW PALMETTO  
EXTRACT

Prostate Health provides a combination of botanicals and nutrients to support a healthy prostate gland. Formulated with Saw Palmetto, Stinging Nettle, Pygeum Bark, Green Tea and other clinically-supported natural ingredients. Prostate Health can help relieve inflammation to maintain healthy urinary flow and prostate function.

## Supplement Facts

Serving Size: 2 Capsules  
Servings per Container: 30

|   | Amount Per Serving | %DV    |
|---|--------------------|--------|
| Vitamin E (D alpha tocopherol acid succinate) | 20mg               | 133%   |
| Vitamin B6 (as Pyridoxine HCl)                | 5mg                | 294%   |
| Zinc (as Zinc Oxide)                          | 5mg                | 45%    |
| Selenium (as Selenium Amino Acid Chelate)     | 210mcg             | 382%   |
| Copper (as Copper Amino Acid Chelate)         | .300mg             | 33.33% |
| Saw Palmetto Berry Extract                    | 400mg              | *      |
| Beta-Sitosterol Complex                       | 100mg              | *      |
| Nettle Root                                   | 300mg              | *      |
| Pygeum Bark Extract                           | 50mg               | *      |
| Green Tea Leaf Extract                        | 30mg               | *      |
| Lycopene                                      | 10mg               | *      |

\*Daily value not established.

Other Ingredients: Silica Dioxide, Magnesium Stearate



## Fertility for Her

### FOLIC ACID + 11 KEY VITAMINS & NUTRIENTS

Fertility for Her is formulated for mother's and baby's health. It provides the necessary vitamins and minerals like Folic Acid, Choline, and Inositol that help create a healthy, fertile environment in preparation for a successful conception.

## Supplement Facts

Serving Size: 4 Capsule  
Servings per Container: 30

|   | Amount Per Serving | %DV     |
|---|--------------------|---------|
| Vitamin A (as Beta Carotene)            | 1.3mg RAE          | 144%    |
| Vitamin C (as Ascorbic Acid)            | 120mg              | 130%    |
| Iron (as Ferrous Biglycinate Chelate)   | 30mg               | 167%    |
| Vitamin D3 (as Cholecalciferol)         | 40mg               | 222%    |
| Vitamin E (DL-alpha tocopherol acetate) | 19mg               | 127%    |
| Thiamin                                 | 2mg                | 167%    |
| Niacin                                  | 2mg NE             | 154%    |
| Vitamin B6 (as Pyridoxine HCl)          | 2mg                | 118%    |
| Folic Acid                              | 400mcg DFE         | 100%    |
| B12 (as Methylcobalamin)                | 240mcg             | 11,667% |
| Biotin                                  | 15mcg              | 50%     |
| Iodine (as Potassium Iodide)            | 290mcg             | 193%    |
| Zinc (as Zinc Oxide)                    | 13mg               | 118%    |
| Selenium (as L-Selenomethionine)        | 70mcg              | 127%    |
| Organic Ashwagandha Root Powder         | 75mg               | *       |
| CoQ10                                   | 10mg               | *       |
| Omega 3 DHA                             | 50mg               | *       |
| Red Clover Extract                      | 75mg               | *       |
| Eleutherococcus Senticosus Extract      | 75mg               | *       |
| Tree Berry Extract                      | 150mg              | *       |
| Ginko Biboba Extract                    | 75mg               | *       |

\*Daily value not established.

Other Ingredients: Vegetable cellulose (capsule).





## Fertility + Prenatal

### COMPREHENSIVE NUTRITIONAL FORMULA

Fertility + Prenatal is formulated for mother's and baby's health. It provides the necessary vitamins and minerals like Folic Acid, Choline, and Inositol that help create a healthy, fertile environment in preparation for a successful conception.

## Supplement Facts

Serving Size: 8 Capsules  
Servings per Container: 30

|                                   | Amount Per Serving | %DV    |
|-----------------------------------|--------------------|--------|
| Vitamin A (as Beta Carotene)      | 1,500 mcg          | 115%   |
| Vitamin C (as Ascorbic Acid)      | 275 mg             | 229%   |
| Vitamin D (as Cholecalciferol)    | 100 mcg (4000 IU)  | 667%   |
| Vitamin E (as D-Alpha Tocopherol) | 19 mg              | 100%   |
| Vitamin K (as K1)                 | 90 mcg             | 100%   |
| Thiamin (B1)                      | 5 mg               | 357%   |
| Riboflavin (B2)                   | 20 mg              | 1,250% |
| Niacin                            | 25 mg              | 100%   |
| Vitamin B6                        | 20 mg              | 1,000% |
| Folate                            | 1,360 mcg DFE      | 227%   |
| Choline                           | 300 mg             | 55%    |
| Calcium                           | 400 mg             | 31%    |
| Vitamin B12 (as Methylcobalamin)  | 2.8 mcg            | 100%   |
| Biotin                            | 500 mcg            | 1,429% |
| Pantothenic Acid                  | 150 mg             | 2,143% |
| Iron                              | 27 mg              | 100%   |
| Iodine                            | 250 mcg            | 86%    |
| Zinc                              | 20 mg              | 154%   |
| Selenium                          | 200 mcg            | 286%   |
| Manganese                         | 5 mg               | 192%   |
| Chromium                          | 90 mcg             | 200%   |
| Molybdenum                        | 50 mcg             | 100%   |
| Potassium                         | 100 mg             | 2%     |
| Inositol                          | 150 mg             | *      |
| Betaine                           | 150 mg             | *      |
| Vitamin K2 (as menaquinone-7)     | 20 mcg             | *      |

\*Daily value not established.

Other Ingredients: Organic Pullulan Capsules, Organic Bamboo, Organic Rice Extract Blend.



## Prenatal

### WITH FOLATE, IRON, & CALCIUM

Get all the essentials you need to support you and your baby's overall wellness before, during and after pregnancy with Purewise Prenatals. Developed with clinically-supported ingredients to ensure healthy prenatal development and nutrition for both mom and baby.

## Supplement Facts

Serving Size: 4 Capsules  
Servings per Container: 30

|                                       | Amount Per Serving | %DV  |
|---------------------------------------|--------------------|------|
| Vitamin C (as Ascorbic Acid)          | 120mg              | 130% |
| Vitamin D3 (as Cholecalciferol)       | 40mg               | 222% |
| Riboflavin                            | 2mg                | 154% |
| Niacin                                | 22mg NE            | 138% |
| Folic Acid                            | 400mcg DFE         | 100% |
| B12 (as Methylcobalamin)              | 12mcg              | 500% |
| Pantothenic Acid                      | 2mg                | 40%  |
| Magnesium (as Magnesium Citrate)      | 100mg              | 24%  |
| Zinc (as Zinc Picolinate)             | 20mg               | 182% |
| Selenium (as L-Selenomethionine)      | 70mcg              | 128% |
| Copper (as Copper Oxide)              | 2mg                | 222% |
| Manganese (as Manganese Citrate)      | 2mg                | 87%  |
| Chromium (as Chromium Polynicotinate) | 120mcg             | 343% |
| Iodine (as Potassium Iodide)          | 150mcg             | 100% |
| FenuGreek Extract                     | 100mg              | *    |
| L-arginine HCl                        | 100mg              | *    |
| L-Carnitine Tartrate                  | 100mg              | *    |
| Organic Ashwagandha Root Powder       | 100mg              | *    |
| Organic Maca Root Powder              | 100mg              | *    |
| Turmeric Powder                       | 100mg              | *    |

\*Daily value not established.

Other Ingredients: Vegetable Cellulose (capsule).



## Organic Prenatal

### WITH FOLATE, CHOLINE, & CALCIUM

Our comprehensive formula contains 20 key nutrients a future mom needs to support a healthy pregnancy and healthy fetal development – all sourced from organic plant-based vitamins and minerals.

## Supplement Facts

Serving Size: 3 Capsules  
Servings per Container: 30

|  | Amount Per Serving | %DV  |
|--|--------------------|------|
| Vitamin A (as Beta Carotene)   | 1,300 mcg          | 100% |
| Vitamin C  | 150 mg             | 125% |
| Vitamin D (D3)   | 18.8 mcg (900 IU)  | 125% |
| Vitamin E  | 19 mg              | 100% |
| Vitamin K  | 90 mcg             | 100% |
| Thiamin (Vitamin B1)   | 1.5 mg             | 107% |
| Riboflavin (Vitamin B2)  | 1.7 mg             | 106% |
| Niacin   | 20 mg              | 111% |
| Vitamin B6   | 9 mg               | 450% |
| Folate   | 800 mcg DFE        | 133% |
| Choline  | 100 mg             | 18%  |
| Calcium  | 255 mg             | 20%  |
| Vitamin B12 (Methylcobalamin)  | 14 mcg             | 500% |
| Biotin   | 210 mcg            | 600% |
| Pantothenic Acid   | 8.05 mg            | 115% |
| Iron   | 27 mg              | 100% |
| Iodine   | 290 mcg            | 100% |
| Zinc   | 13 mg              | 100% |
| Selenium   | 50 mcg             | 71%  |
| Manganese  | 0.6 mg             | 23%  |
| Chromium   | 90 mcg             | 200% |
| Vitamin K2 (as menaquinone-7)  | 20 mcg             | *    |
| Organic Food Blend   | 1.5 g              | *    |
| Organic Curry Nouraya koenigii (leaf), Organic Psidium guajava (Guava fruit & leaf), Organic Sesbania grandiflora (leaf), Organic Emblica (Amla, Phyllanthus emblica) (fruit) Extract, Organic Sea Kelp, Organic Mushroom (Agaricus bisporus), Organic Lemon (fruit & peel), Organic Ocimum sanctum (Holy Basil leaf), Organic Annatto (fruit & seed), Organic Moringa oleifera (Moringa leaf), Organic Apple (fruit), Organic Beet (root), Organic Broccoli (stalk & flower), Organic Carrot (root), Organic Spinach (leaf), Organic Tomato (fruit), Organic Strawberry (fruit), Organic Cherry (fruit), Organic Blackberry (fruit), Organic Green Bell Pepper (fruit), Organic Brussels Sprout (leaf), Organic Ginger (root), Organic Blueberry (fruit), Organic Cranberry (fruit), Organic Garlic (bulb), Organic Green Onion (bulb), Organic Raspberry (fruit), Organic Parsley (leaf), Organic Cauliflower (flower & stem), Organic Red Cabbage (leaf), Organic Asparagus (flower & stem), Organic Celery (stalk), Organic Cucumber (gourd), Organic Kale (leaf), Organic Peppermint (leaf) |                    |      |

\*Daily value not established.

Other Ingredients: Organic Pullulan Capsules, Organic Bamboo, Organic Rice Extract Blend.



## Organic Prenatal + Digestive Support

### WITH FOLATE, CHOLINE, & PROBIOTICS

Our comprehensive multi-nutrient formula includes 23 key nutrients and probiotics to promote a healthy pregnancy and healthy fetal development – powered by organic fruits and vegetables, vitamins, minerals and antioxidants. Make the best choice for you and your baby with Give Naturals Organic Prenatal + Digestive Support.

## Supplement Facts

Serving Size: 3 Capsules  
Servings per Container: 10

|                                   | Amount Per Serving | %DV  |
|-----------------------------------|--------------------|------|
| Vitamin A (as Beta Carotene)      | 1,300 mcg          | 100% |
| Vitamin C                         | 150 mg             | 125% |
| Vitamin D (D3)                    | 35 mcg (1,400 IU)  | 233% |
| Vitamin E (as d-alpha-tocopherol) | 19 mg              | 100% |
| Vitamin K (as K1)                 | 90 mcg             | 100% |
| Thiamin (B1)                      | 1.5 mg             | 107% |
| Riboflavin (B2)                   | 1.7 mg             | 106% |
| Niacin                            | 18 mg              | 100% |
| Vitamin B6                        | 2 mg               | 100% |
| Folate                            | 800 mcg DFE        | 133% |
| Choline                           | 100 mg             | 18%  |
| Calcium                           | 255 mg             | 20%  |
| Vitamin B12 (Methylcobalamin)     | 2.8 mcg            | 100% |
| Biotin                            | 35 mcg             | 100% |
| Pantothenic Acid                  | 8.05 mg            | 115% |
| Iron                              | 27 mg              | 100% |
| Iodine                            | 290 mcg            | 100% |
| Zinc                              | 13 mg              | 100% |
| Selenium                          | 50 mcg             | 71%  |
| Manganese                         | 2.6 mg             | 100% |
| Chromium                          | 90 mcg             | 200% |
| Molybdenum                        | 50 mcg             | 100% |
| Vitamin K2 (as menaquinone-7)     | 20 mcg             | *    |

**Organic Food Blend** 1.5 g \*

Organic Apple (fruit), Organic Emblic (Amla, Phyllanthus emblica) (fruit) Extract, Organic Sea Kelp, Organic Beet (root), Organic Broccoli (stalk & flower), Organic Carrot (root), Organic Spinach (leaf), Organic Tomato (fruit), Organic Strawberry (fruit), Organic Tart Cherry (fruit), Organic Blackberry (fruit), Organic Cranberry (fruit), aOrganic Green Bell Pepper (fruit), Organic Brussels Sprout (leaf), Organic Ginger (root), Organic Garlic (bulb), Organic Green Onion (bulb), Organic Raspberry (fruit), Organic Cauliflower (flower & stem), Organic Red Cabbage (leaf), Organic Asparagus (flower & stem), Organic Kale (leaf), Organic Cucumber (gourd), Organic Celery (stalk), Organic Asparagus (flower & stem)

**Digestive Blend** 52 mg

Lipase, Protease, Aspergillopepsin, beta-Glucanase, Bromelain, Cellulase, Phytase, Lactase, Papin, Peptidase, Pectinase, Xylanase, Hemicellulase, (Lactobacillus bulgaricus, Lactobacillus plantarum, Lactobacillus rhamnosus HN001) (6 Billion CFU)

\*Daily value not established.

Other Ingredients: Organic Pullulan Capsules, Organic Bamboo, Organic Rice Extract Blend.



## Organic Lactation Support

### NATURAL BOTANICAL BLEND

Motherhood can be tough. Let us help provide your baby with the best nutrition with Purewise Organic Lactation Support. Our concentrated liquid extract delivers a potent combination of 7 organic milk-producing and milk-enriching herbs – including Goat's Rue, Milk Thistle, Moringa and Nettle Leaf – in a convenient daily capsule.

## Supplement Facts

Serving Size: 2 Capsules  
Servings per Container: 30

|  | Amount Per Serving | %DV |
|--|--------------------|-----|
| <b>Botanical Extract Blend</b>   | 1,060 mg           | *   |
| Organic Galega Officinalis (Goat's Rue herb), Organic Silybum Marianum (Milk Thistle seed), Organic Asparagus Racemosus (Shatavari root), Organic Medicago Sativa (Alfalfa leaf), Organic Moringa Oleifera (Moringa leaf), Organic Foeniculum Vulgare (Fennel seed), Organic Urtica Dioica (Nettle leaf) |                    |     |

\*Daily value not established.

Other Ingredients: Organic Pullulan Capsules, Organic Bamboo, Organic Rice Extract Blend.



## Organic Postpartum & Menstrual Care

### RESTORES HEALTHY BALANCE

Purewise Organic Postpartum & Menstrual Care delivers a specially formulated botanical blend of 6 time-tested herbs that help provide relief from typical symptoms during postpartum, PMS, and other hormonal changes. Naturally nourish, soothe, and balance your body with Purewise Organic Postpartum & Menstrual Care.

## Supplement Facts

Serving Size: 1 Capsule  
Servings per Container: 30

|  | Amount Per Serving | %DV |
|--|--------------------|-----|
| <b>Botanical Extract Blend</b>   | 560 mg             | *   |
| Organic Nettle leaf, Organic Oatstraw (aerial parts), Organic Red Clover, Organic Red Raspberry (leaf), Organic Shatavari (root), Organic Yarrow (leaf & flower) |                    |     |

\*Daily value not established.

Other Ingredients: Organic Pullulan Capsules, Organic Bamboo, Organic Rice Extract Blend.





## Menopause Support

### FULL VEGAN FORMULA

Don't let "the change" stop you from living your best life. Menopause Support is formulated with Black Cohosh, Dong Quai Root, Blessed Thistle, Red Clover, and other natural ingredients to help manage menopausal symptoms such as hot flashes, night sweats, mood swings, and fatigue.

## Supplement Facts

Serving Size: 2 Capsules  
Servings per Container: 30

|                           | Amount Per Serving | %DV |
|---------------------------|--------------------|-----|
| Red Clover Arieil Extract | 200mg              | *   |
| Sage Extract              | 200mg              | *   |
| Dong Quai Root Extract    | 150mg              | *   |
| Licorice Root Extract     | 150mg              | *   |
| Black Cohosh Extract      | 100mg              | *   |
| Chasteberry Fruit Extract | 50mg               | *   |
| Blessed Thistle Powder    | 50mg               | *   |
| Red Raspberry Powder      | 50mg               | *   |
| Soy Extract               | 30mg               | *   |
| Wild Yam Extract          | 15mg               | *   |
| Trans Resveratrol         | 1mg                | *   |

\*Daily value not established.

Other ingredients: silica dioxide, vegetable magnesium stearate, rice flour, vegetable cellulose (capsule).



## PMS Support

### RESTORES HEALTHY BALANCE

Get all the essentials you need for a balanced and healthy cycle with Purewise PMS Support. Formulated with Chasteberry, Red Maca, Chamomile, and Ashwagandha that can help ease painful PMS symptoms like bloating, headaches, hormonal imbalance, cramps, stress, anxiety, fatigue, and mood swings.

## Supplement Facts

Serving Size: 2 Capsules  
Servings per Container: 30

|  | Amount Per Serving | %DV |
|--|--------------------|-----|
| Iron (as Ferrous Bisglycinate Chelate) | 18mg               | *   |
| Vitamin B12 (Methylcobalamin)          | 2.4mcg             | *   |
| Vitamin B7 (Biotin)                    | 30mcg              | *   |
| Magnesium (as Magnesium Oxide)         | 100mg              | *   |
| Chamomile 4:1 Extract                  | 100mg              | *   |
| Passion Fruit 4:1 Extract              | 100mg              | *   |
| Chasteberry Fruit Extract              | 225mg              | *   |
| Dong Quai Root Extract                 | 200mg              | *   |
| Ashwagandha Root and Leaf Extract      | 100mg              | *   |
| Red Maca Root Powder (gelatinized)     | 50mg               | *   |
| Black Cohosh Extract                   | 50mg               | *   |

\*Daily value not established.

Other ingredients: silica dioxide, magnesium stearate, vegetable cellulose (capsule).





## Memory Support

GINKGO BILOBA, RHODIOLA ROSEA, & HUPERZIA SERRATA

Boost cognitive function with Purewise Memory Support! Formulated with botanical ingredients and nutrients like Ginkgo Biloba, Rhodiola Rosea, and Huperzia Serrata that contribute to improvements in memory and brain function.

## Supplement Facts

Serving Size: 2 Capsules  
Servings per Container: 30

|                               | Amount Per Serving | %DV |
|-------------------------------|--------------------|-----|
| Bacopi Monnieri Leaf Extract  | 300mg              | *   |
| Alpha GPC                     | 200mg              | *   |
| Ginkgo Biloba                 | 100mg              | *   |
| Rhodiola Rosea                | 50mg               | *   |
| DMAE Bitartrate               | 50mg               | *   |
| Huperzia Serrata Leaf Extract | 5mg                | *   |
| Acetyl L-Carnitine HCl        | 50mg               | *   |
| Phosphatidylserine            | 50mg               | *   |

\*Daily value not established.

Other ingredients: silica dioxide, magnesium stearate, vegetable cellulose (capsule).



## Stress Support

OPTIMIZED B-COMPLEX

Experience renewed energy with Purewise Stress Support! Developed with Optimized B-Complex to help support energy metabolism, as well as a blend of botanicals such as Ashwagandha, Holy Basil, and Licorice Root that can reduce symptoms of stress, tension, and anxiety.

## Supplement Facts

Serving Size: 2 Capsules  
Servings per Container: 30

|   | Amount Per Serving | %DV     |
|---|--------------------|---------|
| Vitamin B1 (as Thiamin HCl)                 | 6mg                | 500%    |
| Vitamin B2 (as Riboflavin)                  | 6.5mg              | 500%    |
| Niacin                                      | 16mg NE            | 100%    |
| Vitamin B6 (as Pyridoxine HCl)              | 8.5mg              | 500%    |
| Folate (as Folic Acid)                      | 400mcg             | 167%    |
| Vitamin B12 (as Methylcobalamin)            | 240mcg             | 10,000% |
| Vitamin B5 (as Calcium Pantothenate)        | 16mg               | 320%    |
| Magnesium (as Magnesium Amino Acid Chelate) | 105mg              | 25%     |
| L-Theanine                                  | 50mg               | *       |
| Ashwagandha Root 4:1 Extract                | 200mg              | *       |
| Holy Basil Leaf Powder                      | 100mg              | *       |
| Licorice Root Extract                       | 25mg               | *       |
| Skullcap 4:1 Extract                        | 25mg               | *       |

\*Daily value not established.

Other ingredients: silica dioxide, magnesium stearate, vegetable cellulose (capsule).



## Depression Support

PROMOTE CALM AND RELAXATION

Developed with a comprehensive blend of natural stress-relieving ingredients, Purewise Depression Support is specifically designed to help promote calm and relaxation. Soothe away feelings of stress, anxiety and depression with Gotu Kola, Rhodiola Rosea, Ginkgo Biloba, St. John's Wort, Ashwagandha, and other botanical sources.

## Supplement Facts

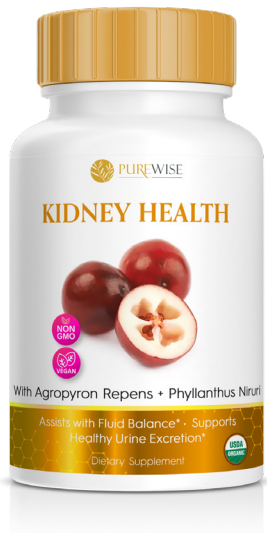
Serving Size: 2 Capsules  
Servings per Container: 30

|                              | Amount Per Serving | %DV |
|------------------------------|--------------------|-----|
| Gotu Kola Herb               | 300mg              | *   |
| Rhodiola Rosea Root Extract  | 200mg              | *   |
| St. John's Wort Powder       | 200mg              | *   |
| Ashwagandha Root 4:1 Extract | 200mg              | *   |
| Lemon Balm Leaf 4:1 Extract  | 200mg              | *   |
| Ginkgo Biloba Leaf Powder    | 100mg              | *   |
| Eleuthero Root Powder        | 100mg              | *   |

\*Daily value not established.

Other ingredients: silica dioxide, magnesium stearate, vegetable cellulose (capsule).





## Kidney Health

### ENHANCED WITH AGROPYRON REPENS + PHYLLANTHUS NIRURI

Purewise Kidney Health is formulated to help maintain the optimal function of your renal and urinary systems. Our proprietary botanical blend assists with fluid balance and supports healthy urine excretion, helping keep your body's natural detoxification systems running smoothly.

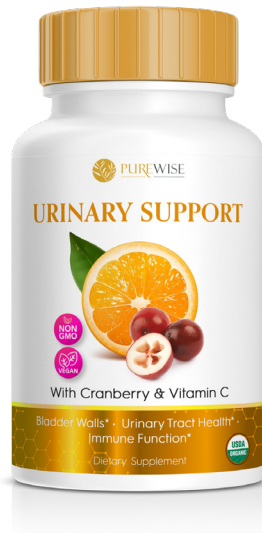
## Supplement Facts

Serving Size: 4 Capsules  
Servings per Container: 30

|                       | Amount Per Serving | %DV |
|-----------------------|--------------------|-----|
| Cranberry             | 220                | *   |
| Goldenrod Herb Powder | 75mg               | *   |
| Uva Ursi Leaf Powder  | 75mg               | *   |
| Melatonin             | 1mg                | *   |
| Milk Thistle Extract  | 200mg              | *   |
| Birch Leaf Powder     | 60mg               | *   |

\*Daily value not established.

Other ingredients: Vegetable cellulose (capsule).



## Urinary Support

### CRANBERRY & VITAMIN C

Maintain a healthy urinary tract with Purewise Urinary Support! Formulated with Cranberry and Vitamin C to naturally support bladder walls, promote urinary tract health, maintain immune function, and protect against oxidative damage from free radicals.

## Supplement Facts

Serving Size: 1 Capsule  
Servings per Container: 30

|                              | Amount Per Serving | %DV  |
|------------------------------|--------------------|------|
| Vitamin C (as Ascorbic Acid) | 90mg               | 100% |
| Cranberry 50:1 Extract       | 600mg              | *    |

\*Daily value not established.

Other ingredients: silica dioxide, magnesium stearate, vegetable cellulose (capsule).



## Liver Health

### WITH BOTANICAL ANTIOXIDANTS

Formulated with Milk Thistle, Beetroot, Chanca Piedra, Chicory Root, and other antioxidant-rich natural ingredients, Purewise Liver Health delivers botanical antioxidant sources to help inflammation and oxidative stress to maintain a healthy liver.

## Supplement Facts

Serving Size: 1 Capsule  
Servings per Container: 30

|                        | Amount Per Serving | %DV  |
|------------------------|--------------------|------|
| Zinc (as Zinc Oxide)   | 30mg               | 273% |
| Choline Bitartrate     | 12mg               | 2%   |
| Milk Thistle Extract   | 250mg              | *    |
| Beet Root Powder       | 50mg               | *    |
| Chanca Piedra Powder   | 50mg               | *    |
| Chicory Root Powder    | 50mg               | *    |
| Jujube Powder          | 50mg               | *    |
| Dandelion Root Powder  | 50mg               | *    |
| Artichoke Leaf Extract | 50mg               | *    |

\*Daily value not established.

Other ingredients: silica dioxide, magnesium stearate, vegetable cellulose (capsule).



## Hair, Skin, & Nails

### BIOTIN + 12 ESSENTIAL NUTRIENTS

Look and feel your best with our Hair, Skin & Nails! Formulated with Biotin and other essential vitamins and nutrients to help promote strong, healthy hair growth + healthy skin and nails.

## Supplement Facts

Serving Size: 3 Capsules

Servings per Container: 30

|   | Amount Per Serving | %DV  |
|---|--------------------|------|
| Vitamin A (as Retinyl Palmate)                            | 900mcg             | 100% |
| Calcium (as Calcium Carbonate and D-Calcium Pantothenate) | 215mg              | 17%  |
| Vitamin D3 (as Cholecalciferol)                           | 20mcg              | 100% |
| Vitamin B1 (as Thiamin HCL)                               | 2mg                | 167% |
| Riboflavin  | 2mg                | 154% |
| Vitamin B6 (as Pyridoxine HCL)                            | 5mg                | 294% |
| Folic Acid  | 200mcg             | 50%  |
| Vitamin B12 (as Methylcobalamin)                          | 4.8mcg             | 200% |
| Biotin  | 30mcg              | 100% |
| Citrus Bioflavonoids                                      | 30mg               | *    |
| Grape Seed Extract  | 10mg               | *    |

\*Daily value not established.

Other Ingredients: Hydrolyze Gelatin, MSM (methylsulfonyl-methane), Bamboo Silica Extract, Hyaluronic Acid Vegetable Cellulose (capsule).





## Glutathione

### SUPERIOR ANTIOXIDANT POWER

Reduce oxidative stress from free radicals with the antioxidant power of Purewise Glutathione. This natural bodily detoxifier also helps eliminate and neutralize toxins in the body, and supports the healthy function of your liver, kidneys, gastrointestinal (GI) tract and intestines.

## Supplement Facts

Serving Size: 2 Capsules  
Servings per Container: 30

|                       | Amount Per Serving | %DV |
|-----------------------|--------------------|-----|
| Glutathione (reduced) | 1,000 mg           | *   |

\*Daily value not established.

Other Ingredients: silica dioxide, magnesium stearate, vegetable cellulose (capsule).



## Apple Cider Vinegar Complex

### WITH CAYENNE FRUIT AND BLACK PEPPER FRUIT

Cleanse your body naturally with our Apple Cider Vinegar Complex! Help relieve digestion issues, boost energy, and detoxify your body with our blend of Organic Apple Cider Vinegar, Cayenne Fruit, and Black Pepper Fruit.

## Supplement Facts

Serving Size: 2 Capsule  
Servings per Container: 30

|                                    | Amount Per Serving | %DV |
|------------------------------------|--------------------|-----|
| Organic Apple Cider Vinegar Powder | 1200mg             | *   |
| Organic Cayenne Fruit Powder       | 50mg               | *   |
| Organic Black Pepper Fruit Extract | 10mg               | *   |

\*Daily value not established.

Other Ingredients: Organic Pullulan Capsule, other organic excipients as needed (Organic Rice Bran, Organic Bamboo Extract, etc)



## Herbal Sleep

### WITH MAGNOLIA BARK EXTRACT HONOKIOL

A natural supplement designed for sleep support, Herbal Sleep is perfect for anyone who has a hard time falling asleep. Formulated with a calming blend of herbs such as Magnolia Bark, Lemon Balm and Chamomile to help you relax and fall asleep quickly with more ease.

## Supplement Facts

Serving Size: 2 Capsule  
Servings per Container: 30

|                                | Amount Per Serving | %DV |
|--------------------------------|--------------------|-----|
| Magnolia Bark Extract Honokiol | 120mg              | *   |
| Lemon Balm                     | 300mg              | *   |
| Chamomile                      | 125mg              | *   |

\*Daily value not established.

Other Ingredients: Vegetable cellulose (capsule), Nu-Mag, Bamboo Silica Extract, Rice Bran Extract







## Keto Advanced Weight Loss

### PREMIUM CLA + MCT BLEND

Support daily health and wellness with Purewise Keto! Formulated with CLA + MCT: healthy fats that have been shown to help break down stored fats, improve lean body mass, and serve as a source of energy.

## Supplement Facts

Serving Size: 2 Capsule  
Servings per Container: 30

|                                  | Amount Per Serving | %DV |
|----------------------------------|--------------------|-----|
| Vitamin B12 (as Cyanocobalamin)  | 120mg              | *   |
| CLA (Conjugated Linoleic Acid)   | 300mg              | *   |
| MCT (Medium Chain Triglycerides) | 125mg              | *   |

Natural Caffeine

\*Daily value not established.

Other ingredients: silicon dioxide, glycerol monostearate, vegetable cellulose (capsule).



## Muscle Support

### PREMIUM HMB FORMULA

Promote muscle growth, recovery and retention with Purewise Muscle Support! Formulated with HMB (Beta-Hydroxy Beta-Methylbutyrate) to support increased lean muscle mass and strength, and improve training endurance and recovery.

## Supplement Facts

Serving Size: 2 Capsules  
Servings per Container: 30

|  | Amount Per Serving | %DV |
|--|--------------------|-----|
| Calcium b-Hydroxy<br>b-Methylbutyrate<br>MonohydrateFolic Acid | 1000mg             | *   |

\*Daily value not established.

Other ingredients: silica dioxide, magnesium stearate, vegetable cellulose (capsule).

## Additional Formulations

- | BLOOD SUGAR SUPPORT
- | B VITAMIN COMPLEX
- | BRAIN SUPPORT
- | VITAMIN C COMPLEX
- | HAIR SUPPORT
- | HORNY GOAT WEED BLEND
- | GINSENG BLEND
- | AMINO ACID BLEND
- | MEN'S HEALTH
- | SUPER TESTOSTERONE
- | THYROID WELLNESS
- | CALCIUM AND VITAMIN C
- | VITAMIN D3 AND K2

CUSTOM FORMULATIONS AVAILABLE.  
**Ask for a quote today!**

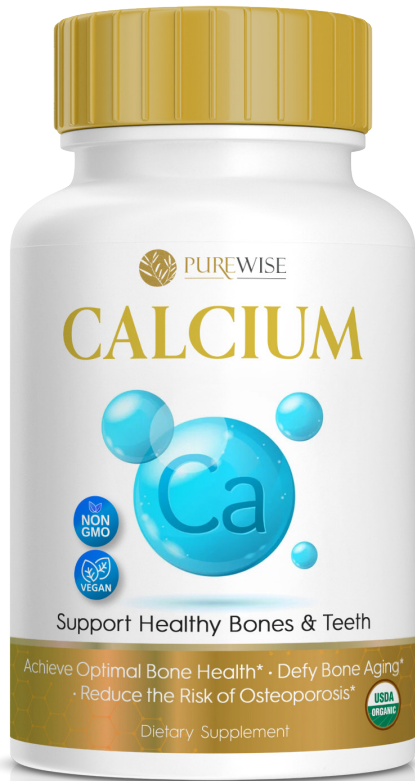
A smiling woman with brown hair tied back, wearing a tan-colored top, holding a bright red apple in her right hand. The background is a blurred indoor setting with shelves containing various items.

# Simple

WELLNESS CAPSULES

Purewise simple capsules are made with pure and premium ingredients to provide specific nutrition for your daily needs. Available in clear capsules, vegetarian capsules, and organic vegetarian capsules.





## Calcium

### SUPPORT HEALTHY BONES AND TEETH

Purewise Calcium helps build, strengthen, and protect your bones and teeth. Take our premium supplement daily to help achieve optimal bone health, defy bone aging and reduce the risk of Osteoporosis.



## Apple Cider vinegar

### SUPPORTS DIGESTIVE HEALTH

Get all the benefits of apple cider vinegar in one convenient capsule – without the pungent smell or taste! Purewise Apple Cider Vinegar helps relieve digestion issues, boost energy, and naturally cleanse your body.

# Additional Formulations

- | Inositol
- | Phosphatidylserine
- | Graviola
- | Garcinia Cambogia
- | Green Coffee Bean Extract
- | Moringa
- | Papaya
- | Spirulina
- | Maca Root
- | Alpha Lipoic Acid
- | CoQ10
- | Ginkgo Biloba
- | Goldenseal
- | Grape Seed Extract
- | Panax Ginseng
- | Melatonin
- | Olive Leaf Extract
- | Resveratrol
- | Saw Palmetto
- | Selenium
- | Spirulina
- | Chlorophyll
- | Biotin

CUSTOM FORMULATIONS AVAILABLE.  
**Ask for a quote today!**

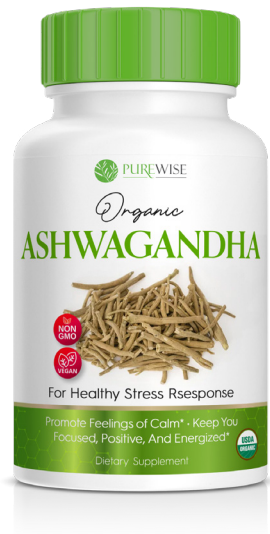


# *Organic*

## CAPSULES

Purewise organic capsules are USDA Organic Certified and Halal Certified; providing only the best in safety and quality for organic supplements. Available in clear capsules, vegetarian capsules, and organic vegetarian capsules.





## Ashwagandha

### FOR HEALTHY STRESS RESPONSE

Made with a powerful adaptogen, Purewise Ashwagandha Capsules help promote feelings of calm, and can help keep you focused, positive, and energized.

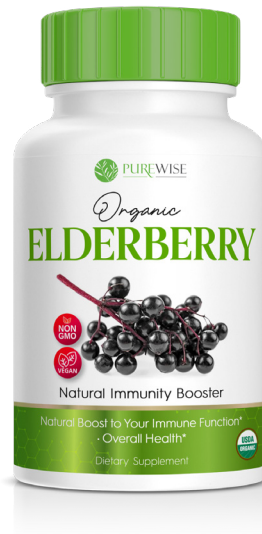
## Supplement Facts

Serving Size: 2 Capsules  
Servings per Container: 30

|                                    | Amount Per Serving | %DV |
|------------------------------------|--------------------|-----|
| Organic Ashwagandha                | 1300mg             | *   |
| Organic Black Pepper Fruit Extract | 10mg               | *   |

\*Daily value not established.

Other ingredients: Organic Pullulan Capsule, other organic excipients as needed (Organic Rice Bran, Organic Bamboo Extract, etc)



## Elderberry

### NATURAL IMMUNITY BOOSTER

Support your body's natural defenses with Purewise Elderberry Capsules! Our botanical blend of organic elderberry exact and acerola fruit extract help provide a natural boost to your immune function and overall health.

## Supplement Facts

Serving Size: 2 Capsules  
Servings per Container: 30

|  | Amount Per Serving | %DV  |
|--|--------------------|------|
| Vitamin C (from Organic Acerola Fruit Extract) | 90mg               | 100% |
| Organic Elderberry Extract 10:1                | 160mg              | *    |

\*Daily value not established.

Other ingredients: Organic Pullulan Capsule, other organic excipients as needed (Organic Rice Bran, Organic Bamboo Extract, etc)



## Beetroot

### OPTIMIZED CIRCULATION + ADVANCED ABSORPTION

Beetroot is rich in nutrients, including antioxidants that fight cell damage, and reduce the risk of inflammation and heart disease. Formulated with Black Pepper for enhanced absorption.

## Supplement Facts

Serving Size: 2 Capsules  
Servings per Container: 30

|                              | Amount Per Serving | %DV  |
|------------------------------|--------------------|------|
| Organic Beetroot Powder      | 1300mg             | 100% |
| Organic Black Pepper Extract | 10mg               | *    |

\*Daily value not established.

Other ingredients: Organic Pullulan Capsule, other organic excipients as needed (Organic Rice Bran, Organic Bamboo Extract, etc)



## Organic Vitamin C

MADE WITH 100% ORGANIC FRUIT

Purewise Organic Vitamin C is made with 100% botanical sources that can help bolster your immune system and provide protective antioxidant activity.

### Supplement Facts

Serving Size: 1 Capsule  
Servings per Container: 30

|   | Amount Per Serving | %DV  |
|---|--------------------|------|
| Vitamin C<br>(from Organic Acerola Fruit extract)                             | 90mg               | 100% |
| Organic Citrus Bioflavonoids Complex<br>(from Organic Orange & Organic Lemon) | 45 mg              | *    |

\*Daily value not established.

Other ingredients: Organic Pullulan Capsule, other organic excipients as needed (Organic Rice Bran, Organic Bamboo Extract, etc)



## Tart Cherry Extract

RICH IN ANTIOXIDANTS

Made with 100% organic fruit, Tart Cherry Extract is rich in powerful antioxidants that can help combat oxidative stress caused by free radicals, and help promote overall health and wellbeing.

### Supplement Facts

Serving Size: 1 Capsule  
Servings per Container: 30

|  | Amount Per Serving | %DV |
|--|--------------------|-----|
| Organic Tart Cherry Extract 10:1<br>(Equivalent to 6,000mg if Tart Cherry Fruit) | 600mg              | *   |

\*Daily value not established.

Other ingredients: Organic Pullulan Capsule, other organic excipients as needed (Organic Rice Bran, Organic Bamboo Extract, etc)







## Organic Mushroom Complex

### PREMIUM 6 MUSHROOM BLEND

Organic Mushroom Complex combines a premium blend of mushrooms all working together to promote outstanding daily health. Featuring Maitake, Chaga, Turkey Tail, Reishi, Cordyceps and Lion's Mane, our comprehensive formula helps boost immunity, support brain function, and promote overall health.

### Supplement Facts

Serving Size: 2 Capsules  
Servings per Container: 30

|                             | Amount Per Serving | %DV |
|-----------------------------|--------------------|-----|
| Organic Maitake Extract     | 167mg              | *   |
| Organic Chaga Extract       | 167mg              | *   |
| Organic Turkey Tail Extract | 167mg              | *   |
| Organic Reishi Extract      | 167mg              | *   |
| Organic Cordyceps Extract   | 167mg              | *   |
| Organic Lion's Mane Extract | 167mg              | *   |

\*Daily value not established.

Other ingredients: Organic Pullulan Capsule, other organic excipients as needed (Organic Rice Bran, Organic Bamboo Extract, etc)



## Organic Turmeric Curcumin

### POWERFUL ANTIOXIDANT + ADVANCED ABSORPTION

Experience the many health benefits of Organic Turmeric Curcumin! Formulated with Black Pepper for enhanced absorption, and 95% curcuminoids that helps reduce inflammation and oxidative, and promotes cardiovascular and joint health.

### Supplement Facts

Serving Size: 1 Capsule  
Servings per Container: 30

|  | Amount Per Serving | %DV |
|--|--------------------|-----|
| Organic Turmeric Root Powder                     | 400mg              | *   |
| Organic Turmeric Root Extract (95% Curcuminoids) | 100mg              | *   |
| Organic Black Pepper Fruit Extract               | 10mg               | *   |

\*Daily value not established.

Other ingredients: Organic Pullulan Capsule, other organic excipients as needed (Organic Rice Bran, Organic Bamboo Extract, etc)



## Supplement Facts

Serving Size: 3 Capsules  
Servings per Container: 30

|   | Amount Per Serving | %DV |
|---|--------------------|-----|
| <b>Organic Fruit Blend</b>  | 1875mg             | *   |
| Consisting of Organic Tomato, Organic Apple, Organic Banana, Organic Elderberry, Organic Strawberry, Organic Goji Berry, Organic Pomegranate, Organic Dragon Fruit, Organic Acai, Organic Blackberry, Organic Pineapple, Organic Raspberry, Organic Blueberry, Organic Cranberry and Organic Lemon. |                    |     |

\*Daily value not established.

Other Ingredients: Organic Pullulan Capsules, Organic Bamboo, Organic Rice Extract Blend, Organic Lime Juice.

## ORGANIC FRUITS

### 15 WHOLE ORGANIC FRUITS

This selection of 15 organic fruits is a great source of natural fiber for healthy digestion, and antioxidants that help combat free radicals.





## Supplement Facts

Serving Size: 3 Capsules  
Servings per Container: 30

|   | Amount Per Serving | %DV |
|---|--------------------|-----|
| <b>Organic Vegetable Blend</b>  | 1875mg             | *   |
| Consisting of Organic Carrot, Organic Green Pea Sprout Powder, Organic Broccoli, Organic Beet, Organic Spinach, Organic Chlorella, Organic Sweet Potato, Organic Green Bell Pepper, Organic Aloe Vera, Organic Reishi Mushroom, Organic Gelatinized Red Maca, Organic White Onion, Organic Garlic, Organic Cabbage, Organic Kale, and Organic Cayenne Pepper. |                    |     |

\*Daily value not established.

Other Ingredients: Organic Pullulan Capsules, Organic Bamboo, Organic Rice Extract Blend.

## Additional Formulations

- | Vitamin E
- | Agaricus Blazei Extract
- | Shiitake Extract
- | Maitake Extract
- | Maca (Black and Red)
- | Lion's Mane Extract
- | Reishi Extract

CUSTOM FORMULATIONS AVAILABLE.  
**Ask for a quote today!**

## ORGANIC VEGGIES

### 16 WHOLE ORGANIC VEGGIES

A selection of 16 organic whole vegetables rich in vitamins and minerals, fiber, protein, antioxidants, and other essential nutrients.





# Powders

Purewise powder formulas can offer greater flexibility with dosing and can be mixed into shakes, juices, or liquids. Our premium powders come in a wide range of packaging options such as tubs, pouches, sachets, and stick-packs.





## Plant Protein Powder

### NATURAL DAILY PROTEIN SOURCE FOR PERFORMANCE

Provide your body with the daily protein it needs with Purewise Plant Protein! This plant-based protein powder is the ultimate gut health-friendly blend formulated to support peak performance, lean muscle growth, and optimum recovery.

## Nutrition Facts

Serving Size: 24g  
Servings per Container: 30

|                    | Amount Per Serving | %DV |
|--------------------|--------------------|-----|
| Calories           | 98                 |     |
| Total Fat          | 2g                 | 3%  |
| Total Carbohydrate | 4g                 | 1%  |
| Total Sugars       | 1g                 |     |
| Protein            | 16g                | 32% |

\*Percent daily value based on a 2,000 calorie diet.

Other ingredients: Pea Protein, Brown Rice Protein Concentrate, Cocoa, Natural Chocolate Flavor, Chia Seed, Monk Fruit, Acacia Gum, Xanthan Gum, Sea Salt.



## Lemon Electrolyte Drink

### REPLENISH AND REHYDRATE FOR PERFORMANCE AND ENDURANCE

Perform better and feel better with a refreshing blend of lemon juice, electrolytes and trace minerals – our Lemon Electrolyte Drink is made to rehydrate and replenish what's lost in sweat when cycling, running, or working out.

## Nutrition Facts

Serving Size: 1 Pack (3.6g)  
Servings per Container: 30

|                          | Amount Per Serving | %DV |
|--------------------------|--------------------|-----|
| Calories                 | 10                 | 0%  |
| Total Fat                | 0g                 | 11% |
| Sodium                   | 260mg              | 1%  |
| Total Carbohydrate       | 2g                 |     |
| Total Sugars             | 0g                 | 0%  |
| Includes 0g Added Sugars |                    |     |
| Protein                  | 0g                 | 4%  |
| Potassium                | 200mg              | 8%  |
| Magnesium                | 30mg               | 20% |
| Zinc                     | 2mg                |     |

\*Percent daily value based on a 2,000 calorie diet.

Other ingredients: Lemon Juice Powder, Sodium Citrate, Magnesium Gluconate, Potassium Citrate, Salt, Citric Acid, Monk Fruit, Zinc Gluconate.

## Additional Formulations

- | Whey Protein Drink Blends
- | Preworkout (Coffee Mix or fruity drink)
- | Energy Drink Blends
- | Electrolyte Drink Blends
- | Collagen Blend
- | BCAA Drink Mix
- | Collagen Protein Drink Blend

CUSTOM FORMULATIONS AVAILABLE.  
**Ask for a quote today!**

# Liquids

Purewise liquid capabilities include extracts, oils, syrups, juices, and beverages. Liquid supplements are ideal for faster delivery and absorption, and our custom formulations offer a wide variety of flavors, potencies, and actives for you to choose from.







## Chlorophyll

### PEPPERMINT FLAVOR

Enjoy the best of Mother Nature with Purewise Liquid Chlorophyll! These plant-powered drops have been shown to help promote healthy skin, optimized digestion, and overall wellbeing.

## Supplement Facts

Serving Size: 1 mL  
Servings per Container: 60

|                             | Amount Per Serving | %DV |
|-----------------------------|--------------------|-----|
| Sodium Copper Chlorophyllin | 50mg               | *   |

\*Daily value not established.

Other ingredients: silicon dioxide, glycerol monostearate, vegetable cellulose (capsule).



## Oregano Oil

### HERBAL HEALTH SUPPORT

Oregano Oil is loaded with antioxidants and powerful compounds that can help improve your health and wellness.

## Supplement Facts

Serving Size: .15 mL  
Servings per Container: 200

|  | Amount Per Serving | %DV |
|--|--------------------|-----|
| Oregano Oil<br>(Standardized to 60% Carvacrol) | 34mg               | *   |

\*Daily value not established.

Other ingredients: Extra Virgin Olive Oil, Mixed Tocopherols (to preserve freshness).



## B-Complex Drops

### WITH VITAMIN B12 + VITAMIN B6

Purewise B-Complex Drops promotes efficient energy and metabolism production to combat deficiency, fatigue, and brain fog. Our easy-to use, fast-absorbing formula also supports normal brain and mood function to promote healthy mental wellness.

## Supplement Facts

Serving Size: .5 mL  
Servings per Container: 60

|                       | Amount Per Serving | %DV      |
|-----------------------|--------------------|----------|
| Methylcobalamin       | 2.5mg              | 104,167% |
| Pyridoxal-5-Phosphate | 10mg               | 58%      |

\*Percent daily value based on a 2,000 calorie diet.

Other ingredients: Glycerin, Purified Water, Natural Flavors.



## Melatonin

### SUPPORT HEALTHY & RESTFUL SLEEP

Purewise Melatonin Drops support a healthy sleep-wake cycle and normal circadian rhythms. Getting adequate sleep contributes in strengthening your immune system, improving mental sharpness, maintaining balanced moods and promoting overall health.

## Supplement Facts

Serving Size: 0.5 mL  
Servings per Container: 60

|           | Amount Per Serving | %DV |
|-----------|--------------------|-----|
| Melatonin | 3mg                | *   |

\*Daily value not established.

Other ingredients: Glycerin, Purified Water, Natural Flavors.



## Sleep (Extra Strength)

### MELATONIN, L-THEANINE, AND VALERIAN ROOT

Sleep Drops promote relaxation and sleep by helping to build the levels of melatonin already present in your brain and by introducing the relaxing properties of L-Theanine. This potent combination also helps to keep you asleep, and reduce anxiety and stress.

## Supplement Facts

Serving Size: .5 mL  
Servings per Container: 60

|                       | Amount Per Serving | %DV |
|-----------------------|--------------------|-----|
| Melatonin             | 3mg                | *   |
| L-Theanine            | 25mg               | *   |
| Valerian Root extract | 10mg               | *   |

\*Percent daily value based on a 2,000 calorie diet.

Other ingredients: Glycerin, Purified Water, Natural Flavors.



## Vitamin K2

### BONE AND HEART HEALTH

Vitamin K2 supports bone health, helps protect against cardiovascular disease, and helps protect the skin, brain, and prostate. Purewise K2 Drops provide 120mcg of Vitamin K2 (MK-7) in each drop suspended in a medium chain triglyceride (MCT) oil base. MCT oil consists of stable fatty acids that enhance the absorption of fat-soluble nutrients, such as vitamin K2.

## Supplement Facts

Serving Size: 1 mL  
Servings per Container: 60

|              | Amount Per Serving | %DV  |
|--------------|--------------------|------|
| K2 (as MK-7) | 120mg              | 100% |

\*Daily value not established.

Other ingredients: Organic MCT Oil, Mixed Tocopherols





## Vitamin D3

### FOR OPTIMAL CALCIUM ABSORPTION

Our vegan plant-based Vitamin D3 Drops are derived from lichen delivered in the optimal Cholecalciferol form. Vitamin D keeps healthy bones and teeth by increasing our absorption of calcium. Vitamin D is also necessary for healthy tissue growth and for regulating normal immune function.

## Supplement Facts

Serving Size: 1mL  
Servings per Container: 30

|                        | Amount Per Serving | %DV  |
|------------------------|--------------------|------|
| Vitamin D3 (as lichen) | 100mcg             | 500% |

\*Percent daily value based on a 2,000 calorie diet.  
Other ingredients: Organic MCT Oil, Organic Natural Flavor.



## Quercetin

### IMMUNE SUPPORT

Purewise Quercetin Drops absorb more readily into your system, working faster and more efficiently at reducing inflammation and supporting overall immunity. Quercetin is a bioflavonoid found in many plants, which helps fortify immune defense all year-round which plays an important role in defending the body against seasonal allergies.

## Supplement Facts

Serving Size: 4 mL  
Servings per Container: 30

|           | Amount Per Serving | %DV |
|-----------|--------------------|-----|
| Quercetin | 500mg              | *   |

\*Daily value not established.  
Other ingredients: Organic Non-GMO Glycerin, Organic MCT Oil, Purified Water, Sunflower Lecithin, Acacia Gum, Natural Flavors, Citric Acid, Potassium Sorbate.



## L-Carnitine + Vitamin B5

### CLEAN SOURCE OF ENERGY

Support a healthy and active lifestyle with L-Carnitine + Pantothenic Acid Drops! L-Carnitine helps you convert fatty acids to energy and quickly distribute it to all your cells. Vitamin B5 (also known as Pantothenic Acid) is one of the B-complex vitamins that help your body convert food into fuel and plays an important role to the production of red blood cells.

## Supplement Facts

Serving Size: 15 mL  
Servings per Container: 30

|                                   | Amount Per Serving | %DV  |
|-----------------------------------|--------------------|------|
| Pantothenic Acid (as Dexpantenol) | 10mg               | 200% |
| L-Carnitine                       | 1500mg             | *    |

\*Daily value not established.  
Other ingredients: Organic Vegetable Glycerin, Water (Reverse Osmosis), Citric Acid, Natural Flavor, Potassium Sorbate, and Sodium Benzoate.



## Daily Mineral

### MAGNESIUM, CHLORIDE & SODIUM

The modern diet leaves us deficient in many essential vitamins and nutrients. Perhaps the most damaging is the chronic lack of trace minerals. Our Trace Mineral blend is an all natural way to obtain those nutrients. Carefully blended, it is high in trace minerals including Magnesium, Chloride, and Sodium.

## Supplement Facts

Serving Size: 8 drops (0.4ml) in 1L Water  
Servings per Container: 75

|           | Amount Per Serving | %DV |
|-----------|--------------------|-----|
| Magnesium | 32mg               | 8%  |
| Chloride  | 105mg              | 5%  |
| Sodium    | 6mg                | <1% |

\*Percent daily value based on a 2,000 calorie diet.

Other Ingredients: Purified Water, Concentrated Seawater, Magnesium Chloride, Pink Himalayan Salt, Citric Acid.



## Sport Mineral

### MAGNESIUM, ZINC, CHLORIDE & SODIUM

Trace Minerals puts these important ions back in your body to promote a healthier, more balanced, life. Each serving of our mineral drops gives you your daily potent dose of Magnesium, Zinc, Chloride and Sodium – all essential trace minerals that work together to keep your body strong, increase energy, and balance your health to support an active lifestyle.

## Supplement Facts

Serving Size: 40 drops (2ml) in 500mL Water  
Servings per Container: 15

|           | Amount Per Serving | %DV |
|-----------|--------------------|-----|
| Magnesium | 70mg               | 16% |
| Zinc      | 3 mg               | 27% |
| Chloride  | 370mg              | 16% |
| Sodium    | 70mg               | 3%  |

\*Percent daily value based on a 2,000 calorie diet.

Other Ingredients: Purified Water, Seawater, Magnesium Chloride, Pink Himalayan Salt, SunActive™ Zinc-P240, Citric Acid.



## Mushroom Liver

### POTENT MUSHROOM & HERBS

Our comprehensive blend of organic mushrooms, herbs, and botanical extracts have been carefully selected to provide the optimal formula for supporting liver health and promoting natural detoxification.

## Supplement Facts

Serving Size: 1mL (about 30 drops)  
Servings per Container: 60

|                     | Amount Per Serving | %DV |
|---------------------|--------------------|-----|
| Organic Fruit Blend | 1 mL               | *   |

Consisting of Organic Organic Shiitake High Density Extract Powder, Organic Cordyceps High Density Extract Powder, Organic Maitake High Density Extract Powder, Milk Thistle Seed Extract, Green Tea Extract 50% Polyphenols, Astragalus Root Extract, Stevia Leaf Extract.

\*Daily value not established.

Other Ingredients: Vegetable Glycerin and Reverse Osmosis Water.





## Astragalus Root

### IMMUNE SUPPORT & OVERALL WELLNESS

Used in traditional Chinese medicine for centuries, Astragalus extracts have been used to help support the cardiovascular health, immune system support, and kidney and liver function. Our bioavailable liquid formula is easy to take and fast-absorbing compared to traditional pills.

### Supplement Facts

Serving Size: 15 drops (0.5mL)  
Servings per Container: 60

|  | Amount Per Serving | %DV |
|--|--------------------|-----|
| Organic Astragalus<br>(Astragalus Membranaceus) Root | 0.5mL              | *   |

\*Percent daily value based on a 2,000 calorie diet.

Other ingredients: Organic Vegetable Glycerin and Purified Water.



## Vitamin D3 + K2

### SUPPORTS STRONG BONES

Our powerful organic D3 + K2 formula is designed to help optimize your health. Vitamins D3 and K2 are natural partners in helping maintain strong bones, immune system support, healthy muscle function, and optimum heart health.

### Supplement Facts

Serving Size: 1mL  
Servings per Container: 30

|                                 | Amount Per Serving | %DV  |
|---------------------------------|--------------------|------|
| Vitamin D3 (as Cholecalciferol) | 125mcg             | 625% |
| K2 (as MK-7)                    | 120mcg             | 100% |

\*Daily value not established.

Other ingredients: Organic MCT Oil, Mixed Tocopherols



## Echinacea

### IMMUNITY AND MENTAL CLARITY

Support your health with Purewise Organic Echinacea Drops! This botanical extract helps support immune system function, boost mental performance, balance mood, and promote heart health. Our bioavailable liquid formula is easy to take and fast-absorbing compared to traditional pills.

### Supplement Facts

Serving Size: 15 drops (0.5mL)  
Servings per Container: 60

|                            | Amount Per Serving | %DV |
|----------------------------|--------------------|-----|
| Organic Echinacea Purpurea | 0.5mL              | *   |

\*Percent daily value based on a 2,000 calorie diet.

Other ingredients: Organic Vegetable Glycerin and Purified Water.



## Ginkgo Biloba

### SUPPORTS COGNITIVE FUNCTION

Ginkgo Biloba is a powerful herb that has been used for centuries to naturally promote cognitive function, memory, and concentration. Our Ginkgo Leaf drops are designed for respiratory support and the promotion of blood circulation, as well as help provide nootropic and neuroprotective benefits.

### Supplement Facts

Serving Size: 15 drops (0.5mL)  
Servings per Container: 60

|                                     | Amount Per Serving | %DV |
|-------------------------------------|--------------------|-----|
| Organic Ginkgo (Ginkgo Biloba) Leaf | 0.5mL              | *   |

\*Percent daily value based on a 2,000 calorie diet.

Other ingredients: Organic Vegetable Glycerin and Purified Water.



## Milk Thistle

### LIVER SUPPORT & NATURAL DETOX

Protect and improve your liver's function with our Organic Milk Thistle Drops! This Plant-Powered Extract helps strengthen your immunity while promoting healthy liver functions and natural detoxification.

### Supplement Facts

Serving Size: 15 Drops (.5mL)  
Servings per Container: 60

|  | Amount Per Serving | %DV |
|--|--------------------|-----|
| Organic Milk Thistle (Silybum Marianum) Seed | 0.5mL              | *   |

\* Daily Value (DV) not established.

Other ingredients: Organic Vegetable Glycerin and Purified Water.



## Sea Moss

### GUT HEALTH & IMMUNITY

We've created a powerful Organic Sea Moss Drops that's packed With Fiber, Vitamins, And Key Nutrients that help fortify your joint, gut, and immune system health. Our liquid supplement contains high volumes of iodine, magnesium, iron, and calcium which all help with general thyroid function.

### Supplement Facts

Serving Size: 30 Drops (1mL)  
Servings per Container: 30

|   | Amount Per Serving | %DV |
|---|--------------------|-----|
| Organic Irish Sea Moss (Chondrus Crispus) Extract | 1mL                | *   |

\* Daily Value (DV) not established.

Other ingredients: Organic Vegetable Glycerin and Water (Reverse Osmosis)





## Stinging Nettle

### CLEANSING AND DETOX

Protect and improve your liver's function with our Organic Milk Thistle Drops! This Plant-Powered Extract helps strengthen your immunity while promoting healthy liver functions and natural detoxification.

## Supplement Facts

Serving Size: 15 Drops (0.5mL)  
Servings per Container: 30

|   | Amount Per Serving | %DV |
|---|--------------------|-----|
| Organic Stinging Nettle<br>(Urtica dioica) Leaf | 0.5mL              | *   |

\* Daily Value (DV) not established.

Other ingredients: Organic Vegetable Glycerin, Purified Water.



## Valerian Root

### SLEEP & RELAXATION

The calming effects of Valerian Root have been well documented throughout history. For centuries, Valerian Root has been used to alleviate problems with sleep and anxiety. Our Valerian Root Drops comes in a concentrated liquid form, allowing for faster absorption compared to traditional capsules or tablets.

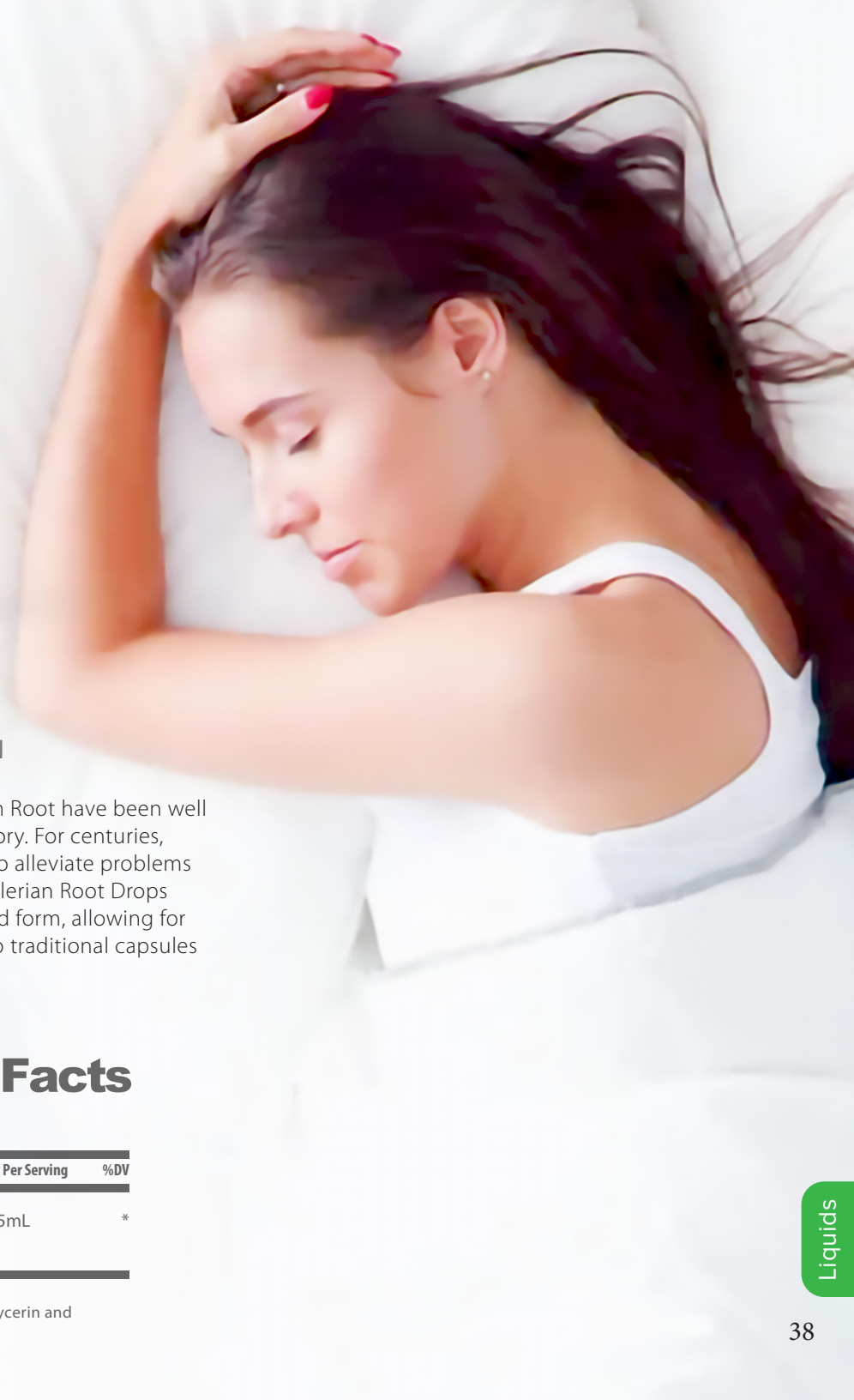
## Supplement Facts

Serving Size: 15 Drops (0.5mL)  
Servings per Container: 30

|   | Amount Per Serving | %DV |
|---|--------------------|-----|
| Organic Valerian<br>(Valeriana Officinalis) Extract | 0.5mL              | *   |

\* Daily Value (DV) not established.

Other ingredients: Organic Vegetable Glycerin and Water (Reverse Osmosis)





## Rose Petal

### BOTANICAL BLEND OF FLOWER PETALS & LEAVES

Enjoy health and beauty with our Rose Petal Drops! This botanical blend of flower petals and leaves helps encourage healthy skin by providing vital nutrients for rejuvenation and supporting healthy responses against environmental elements. This supplement also promotes emotional balance by having a calming and relaxing effect on our mind.

## Supplement Facts

Serving Size: 30 Drops (1mL)  
Servings per Container: 30

|   | Amount Per Serving | %DV |
|---|--------------------|-----|
| <b>Organic Proprietary Extract Blend</b>  | 1 mL               | *   |
| Organic Damiana Leaf (turnera diffusa), Organic Linden Leaf and Flower (tilia europaea), Organic Hawthorn Leaf and Flower (Crataegus monogyna), Organic Pink Rose Flower (rosa damascena), Organic Red Rose Flower (rosa centifolia), Organic Heather Leaf and Flower (calluna vulgaris), Organic Honeysuckle Flower (lonicera japonica), Organic Ginger Root |                    |     |

\*Daily value not established.  
Other Ingredients: Organic Vegetable Glycerin and Water (Reverse Osmosis).



## Methyl B-12

### FOR MAINTAINED ENERGY LEVELS

Maintain your body's energy levels and benefit your brain by supporting neurofunction with our Organic B12 Liquid Spray. B12 may help the body with normal nerve function, red blood cell production, and improved energy.

## Supplement Facts

Serving Size: 1 Dropper (1 ml)  
Servings per Container: 30 (Approx.)

|                                 | Amount Per Serving | %DV    |
|---------------------------------|--------------------|--------|
| <b>B12 (as Methylcobalamin)</b> | 720mcg             | 30000% |

\*Percent daily value based on a 2,000 calorie diet.

Other Ingredients: Organic Non-GMO Vegetable Glycerin Purified Water, Organic Strawberry Flavor, Organic Citric Acid, and Organic Mushroom Mycelium.



## Collagen Blend

### PLUS BIOTIN & SILICA

Purewise Collagen Blend combines Hydrolyzed Collagen + Silica and Biotin. This unique formula can help preserve lean muscle, promote joint mobility, and maintain hair, skin and nail health.

## Supplement Facts

Serving Size: 1 Tablespoon  
Servings per Container: 32

|  | Amount Per Serving | %DV  |
|--|--------------------|------|
| Calories   | 40                 |      |
| Calories from Fat  | 0                  |      |
| Total Fat  | 0                  | 0    |
| Saturated Fat  | 0                  | 0    |
| Carbohydrates  | <1g                | <1%  |
| Sugars   | 3g                 | *    |
| Protein  | 7.5g               | 15%  |
| Each 1 tablespoon serving contains the following: Proprietary Blend of Hydrolyzed Collagen |                    |      |
|  | 7.5g               | 15%  |
| Silica   | 50mg               |      |
| Biotin   | 300mg              | 100% |

Amino Acid Profile derived from protein: Alanine, Arginine Aspartate, Cystine, Glutamate, Glycine, Histidine, Isoleucine, Leucine, Lysine, Methionine, Phenylalanine, Proline, Serine, Threonine, Tryptophan, Tyrosine, Valine.

\*Percent daily value based on a 2,000 calorie diet.  
Other ingredients: water, fructose, natural raspberry flavor, and potassium sorbate





## Black Cherry Concentrate

MADE WITH 100% ORGANIC FRUIT

Made with 100% organic fruit, Black Cherry Concentrate is rich in powerful antioxidants that help combat oxidative stress caused by free radicals, and reduce inflammation. Our delicious concentrate is also ideal for juices, tropical smoothies, fruit cocktails + a healthy topping for yogurt, ice cream, fruit, pastry and dessert.

### Supplement Facts

Serving Size: .5 mL  
Servings per Container: 60

|                     | Amount Per Serving | %DV |
|---------------------|--------------------|-----|
| Calories            | 70                 |     |
| Calories from Fat   | 0                  |     |
| Total Fat           | 0                  | 0   |
| Sodium              | 0                  | 0   |
| Total Carbohydrates | 16g                | 5%  |
| Dietary Fiber       | <1g                | 15% |
| Sugars              | 12g                | *   |
| Protein             | 1g                 | 2%  |
| Vitamin A           |                    | <1% |
| Vitamin             |                    | 4%  |
| Calcium             |                    | 2%  |
| Iron                |                    | <1% |

\*Percent daily value based on a 2,000 calorie diet.  
Other ingredients: Black Cherry Juice Concentrate



## Vitamin C

FOR KIDS AND ADULTS

Give your immune system the boost it needs with Purewise Liquid Vitamin C! This essential vitamin is rich in antioxidants that help limit the damage done by free radicals while supporting immune function and overall well-being. Our fast-absorbing and easy-to-take liquid formula is suitable for all ages.

### Supplement Facts

Serving Size: 2 tsp (10mL)  
Servings per Container: 12

|  | Amount Per Serving | %DV  |
|--|--------------------|------|
| Vitamin C<br>(as Sodium Ascorbate and Ascorbic Acid) | 250mg              | 278% |

\*Percent daily value based on a 2,000 calorie diet.  
Other ingredients: Purified Water, Fructose, Vegetable Glycerin, Citric Acid, Natural Flavor, Potassium Sorbate (to preserve freshness), Grapefruit Extract.

# Additional Formulations

Multivitamin Liquid  
Hair, Skin & Nails  
Zinc Drops  
Elderberry  
Iron Drops  
Herbal Glycerin Tinctures  
Turmeric Extract  
Ashwaghandha Extract  
Lions Mane Mushroom Extract  
Kava Extract  
Omega-3 Drops  
Pure Iodine Drops  
Papaya Tincture  
Liquid Multivitamin Concentrate  
100% Organic Noni Juice  
Flavored Noni Juice  
Tart Cherry Concentrate  
Dark Sweet Cherry Concentrate  
Cranberry Concentrate  
Blueberry Concentrate  
MCT Oil  
Weight Management Liquid Blend  
Grapefruit Seed Drops  
Green Tea Liquid Blend  
Joint Support Drops  
Organic Adrenal Support Drops  
Organic Turmeric and Black Pepper Blend  
Organic Lion's Mane Drops  
Organic Ginseng Drops  
Organic Maca Root Drops  
Calcium and Magnesium Liquid Blend  
Iodine Drops

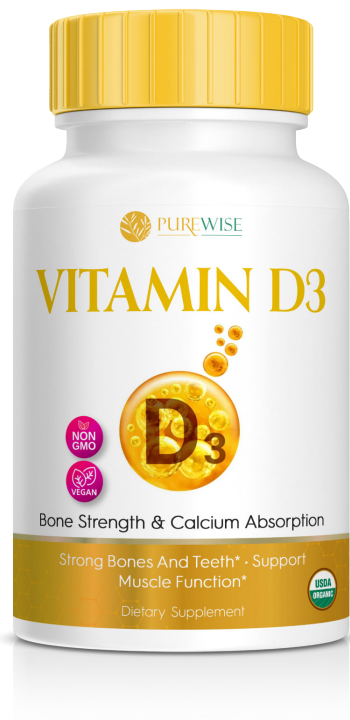
CUSTOM FORMULATIONS AVAILABLE.  
**Ask for a quote today!**



# Softgels

Purewise softgels are one of the best methods for oil based formulations, and provide enhanced bioavailability and absorption of active ingredients. Available in traditional softgels and vegetarian softgels. Organic formulations available.





## Vitamin D3

### BONE STRENGTH & CALCIUM ABSORPTION

Purewise Vitamin D Softgels provide your daily dose of this essential nutrient to help support a healthy immune response, aid in calcium absorption to support strong bones and teeth, and support muscle function.

## Supplement Facts

Serving Size: 1 Softgel  
Servings per Container: 30

|  | Amount Per Serving | %DV  |
|--|--------------------|------|
| Vitamin D3 5000IU (as Cholecalciferol) | 125mg              | 625% |

\* Daily Value (DV) not established.

Other ingredients: Carrageenan, Modified Starch, Glycerin, and Water.



## Eye health

### COMPREHENSIVE MACULAR HEALTH SUPPORT

Eye Health Softgels offer daily comprehensive macular health. Formulated with vital nutrients like Lutein, Zeaxanthin, Astaxanthin and Hyaluronic Acid to help support eye health as you age.

## Supplement Facts

Serving Size: 1 Softgel  
Servings per Container: 30

|                                       | Amount Per Serving | %DV  |
|---------------------------------------|--------------------|------|
| Vitamin C (Ascorbic Acid)             | 150mg              | 167% |
| Vitamin E (d-Alpha-Tocopherol)        | 30mg               | 200% |
| Zinc (Zinc Oxide)                     | 9mg                | 82%  |
| Copper (Copper Gluconate)             | 1mg                | 111% |
| Hyaluronic Acid (Sodium Hyaluronate)  | 1000mg             | **   |
| Lutein (from Marigold)                | 5mg                | **   |
| Zeaxanthin (from Marigold)            | 1mg                | **   |
| Astaxanthin (Haemotococcus pluvialis) | 25mcg              | **   |
| Omega-3 Fatty Acids (from Fish Oil)   | 250mg              | **   |
| EPA (Eicosapentaenoic Acid)           | 150mg              | **   |
| DHA (Docosahexaenoic Acid)            | 100mg              | **   |

\*Percent daily value based on a 2,000 calorie diet.

\*\*Daily value not established.

Other ingredients: Carrageenan, Modified Starch, Glycerin, and Water.

# Additional Formulations

GARLIC EXTRACT  
VITAMIN K2  
CAPRYLIC ACID  
SUPER MULTIVITAMIN  
FISH OIL  
CLA  
VITAMIN E  
BIOTIN  
EYE HEALTH  
ORGANIC FLAX OIL (WITH LIGNAN)  
SAW PALMETTO  
MELATONIN  
LYCOPENE  
LUTEIN  
OMEGA 3-6-9  
OREGANO OIL  
PHOSPHATIDYLCHOLINE  
PHOSPHATIDYLSERINE  
LECITHIN  
COQ10  
CRANBERRY EXTRACT  
COD LIVER OIL  
VITAMIN A (BETA CAROTENE)  
BIOTIN  
B VITAMIN COMPLEX  
ASTAXANTHIN  
ANTIOXIDANT BLEND  
ALPHA LIPOIC ACID

CUSTOM FORMULATIONS AVAILABLE.  
**Ask for a quote today!**



## Tablets

Purewise tablets are ideal for multivitamin and multi-ingredient formulas. Tablets hold more product within the space of a supplement. This format can also extend the stability and shelf life of your product for a longer period of time. Purewise offers chewables, effervescent, and organic tablets.





## Vitamin C Chewables

### DELICIOUS ORANGE FLAVOR

Purewise Vitamin C Chewables are packed with nutritional support and free radical defense. Rich in antioxidants, our high-potency Vitamin C promotes immune function, healthy cell reproduction, and overall well-being.

## Supplement Facts

Serving Size: 1 Tablet  
Servings per Container: 30

|                    | Amount Per Serving | %DV  |
|--------------------|--------------------|------|
| Total Carbohydrate | Less than 1g       | <1%  |
| Vitamin C          | 500mg              | 556% |
| Sodium             | 35mg               | 2%   |

\*Percent daily value based on a 2,000 calorie diet.  
Other ingredients: Sorbitol, Sodium Ascorbate, Ascorbic Acid, Corn Starch, Magnesium Stearate, Natural & Artificial Orange Flavors, Silicon Dioxide, Sucralose, Orange Juice Powder.



## Bone Builder Chewables

### CALCIUM + VITAMIN D FOR KIDS

Help your child build strong bones and teeth with Purewise Bone Builder Chewables. One serving provides an excellent source of Calcium for strengthening and protecting bones and teeth, and Vitamin D for promoting better Calcium absorption.

## Supplement Facts

Serving Size: 1 Tablet  
Servings per Container: 30

|                                | Amount Per Serving | %DV  |
|--------------------------------|--------------------|------|
| Vitamin D (as Cholecalciferol) | 25mg (1,000IU)     | 125% |
| Calcium (as Calcium Carbonate) | 600mg              | 46%  |

Other ingredients: Sorbitol, Magnesium Stearate, Natural Flavor, Citric Acid.

## Additional Formulations

- | B-Vitamin Complex
- | Calcium
- | Calcium, Magnesium, & Zinc
- | Folic Acid
- | Magnesium
- | Potassium Gluconate
- | Hair, Skin, & Nails
- | Men's Health Complex
- | Minerals Complex
- | Women's Health Complex
- | Vitamin B12
- | Vitamin D3 & K2
- | Zinc Gluconate

CUSTOM FORMULATIONS AVAILABLE.  
**Ask for a quote today!**



# Personal CARE

Beyond supplements, Purewise has diversified its manufacturing capabilities to include lotions, creams, serums, and balms as well as personal care and beauty products, while offering the same promise of providing you the highest quality at the best price. We are members of the Independent Beauty Association (formerly ICMAD).





## RELIEVING SALVE

### WITH LAVENDER ESSENTIAL OIL

Soothe your skin and your senses with Purewise Relieving Salve! Made with natural essences and moisturizers, this salve helps relieve dry, cracked, or irritated skin, while also promoting relaxation and respiratory support.



## MUSCLE RUB BALM

### WITH ESSENTIAL OILS

Relieve your body and mind with Purewise Muscle Rub Balm. Our combination of essential oils and botanical essences support all-natural long-lasting pain relief, while also helping relieve chest and nasal congestion.

## Additional Formulations

- | Eye Serum
- | Facial Serum
- | Massage Oil
- | Beard Oil

CUSTOM FORMULATIONS AVAILABLE.  
**Ask for a quote today!**



USA  
Manufacturer



**PUREWISE**

Advancing Well-Being through Active Donations to  
Domestic and Global Charitable Causes

Supporting Valued Clients  
Across the World

☎ +1 (307) 336-7873

✉ [help@purewisenaturals.com](mailto:help@purewisenaturals.com)

🌐 [purewisenaturals.com](http://purewisenaturals.com)